

FALL WINTER 23 / 24

JAIL JAM

JAILJAM

WE BELONG OUTSIDE

FALL WINTER 23 / 24





JL

JAILJAM

WE BELONG OUTSIDE

| | |
|-----------------------|----------|
| APPLE URBAN | pag. 10 |
| APPLE OUDOOR | pag. 80 |
| CARAMBOLA | pag. 100 |
| STRAWBERRY | pag. 122 |
| POP - MERCHANDISING | pag. 144 |
| PACKAGING | pag. 148 |
| TECHNICAL INFORMATION | pag. 149 |
| INDEX | pag. 152 |

JAIL JAM

WE BELONG OUTSIDE



ABOUT US

JAIL JAM, born in 2013, is a brand of those who love to live in the world, wherever it is, as long as it is in outdoor. At our headquarters in Bologna, we develop products and accessories with a completely Italian, versatile and authentic design: colours and lines to complete a fashionable outfit, high-quality materials to discover nature, but above all, we create a free and open spirit that embraces everyone who wants to express themselves as they are, without labels. A formula that works and which, fuelled by our passion, has allowed us to expand rapidly in Italy and in most countries of the world.

BRAND MANIFESTO

We don't like restrictions, constraints or life within four walls. The city is our playground, the outdoors - our natural habitat.

Everything that really matters is out there.

Because "outside" is where we meet, we get to know each other and, together, we free our passions. Outside is our lifestyle and our way of being. Outside is our freedom of expression and movement.

But above all, outside is our home, infinite and without walls. The most welcoming place for those who, like us, look for space to let your dreams run wild.

JAIL JAM
WE BELONG OUTSIDE
#EVERYBODYOUT



VISION

We want to be a point of reference for those who enjoy outdoor life discovering their main passion. Whether it's a hike in the middle of nature or a city exploration, Jail Jam items are the perfect accessory to express your personality and feel comfortable anywhere, as long as it's "out there".



MISSION

Our mission is to create original and trendy products, that not only can combine aesthetic taste, but also meet the needs of someone who likes to live in outdoors. We promise to do our best to preserve and protect the world out there, trying to reduce more and more our impact on the planet.

SOCIAL COLLABS & SEEDING

The importance of communication is fundamental in the new millennium.
The Internet and social media are the key for brand visibility.
The magazines, bloggers and influencers influencing public opinion and helping to build
a positive perception and to transmit the image of the company.



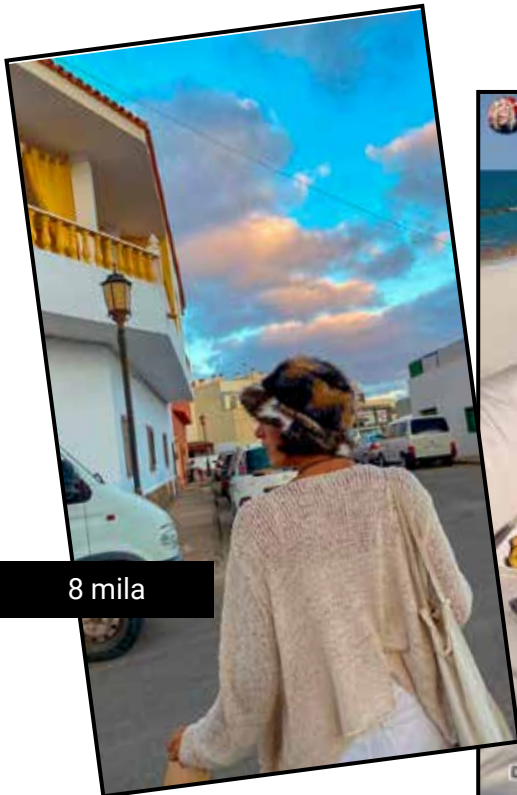
24,4 mila



231 mila



73 mila



8 mila



216 mila



1,2 M

PRESS AGENCY



ELLE ITALIA



AMICA



STYLE PICCOLI



ELLE ITALIA



ICON MAGAZINE



STYLE PICCOLI

SUSTAINABILITY

In recent years, interest and awareness of environmental problems has increased.

We at Jail Jam have been firmly believing in the deepest connection between man and nature for almost a decade. The outdoors is a lifestyle, not just a business that needs to be followed in accordance with the current trend.

This great love for open spaces encourages us to improve, and today, compared to the past, we can certainly be delighted with the positive changes that we have implemented as a company and as people.

In fact, this collection will feature a large number of products with recycled yarn, such as **R-PET** and **REPVEVE**, which are obtained from plastic bottles during the recovery and recycling of conventional PET, which include sorting, washing, grinding and fusing of plastic materials.

Many products will have a STANDARD 100 by OEKO-TEX® certificate, which guarantees their compliance with legal requirements. It also certifies that the product marked with the STANDARD 100 is reliably certified for the presence of harmful substances.

The product changes with the packaging. Polybags will be made of 100% recycled material and will contain three items instead of the original single package, this will allow us to reduce plastic consumption by 66%.

The hang tags and gift boxes are made of 100% recycled paper, which will save 65% of the energy needed to produce new paper and reduce water pollution by 35% and air pollution by 74%.

Together with Italian citizens and companies, we have joined forces to reach and exceed the European target of an 85% recycling rate for paper and cardboard packaging 15 years in advance. In fact, at the end of 2020, 87.3% of waste from the paper or publishing industries, offices, commercial and transport activities and household waste was recycle to give it a second life (2021 data from Unione Nazionale Imprese Raccolta, Recupero, Riciclo e Commercio dei Maceri e altri Materiali)

We, Mirage SRL, have been always sensitive to these topics, in fact, our office uses modern solar panels system that allow us both to fully cover our energy needs and to introduce clean energy into the public network and, therefore, to be a CO2 free company.

In the future, we plan to step up actions to protect the environment in order to be able to live again on a planet full of wonders and be able to leave a great legacy for future generations.





JA4494-JA4587
JA4500-JA4571

TRENDY **AND** FASHIONABLE

From city to mountains, with Apple 014 014 you give vitality and dynamism to any outfit.

The energy of design is voice of a modern vintage style with a boho chic touch, enriched by authenticity typical of jail jam. braiding and 3d effect, photo sensitive and reflective yarn, colourful turmoil, and jazzy versions for the most imaginative.

Ladies, with glamour soul, can choose between different models enriched by metallic inserts, lurex and animalier jAqua 011rds. boys, dynamic and casual, can dare with vintage patterns and shade on winter tones.

Apple 01



JA4512-JA4452
JA4497-JA4495



JA4525-JA4452
JA4494-JA4500

JA4493 | FRANKLIN

SHELL: 43% POLYESTER, 27% ACRYLIC,
15% POLYAMIDE, 10% WOOL, 5% ELASTANE

ONE SIZE

PACKAGED FOR SALE
3 PCS. PER COLOUR



AQUA 011



AVIO 007



BEIGE 031



BLACK 001



BLUE NAVY 006



FUXIA 024



IVORY 043



MED GREY 003



PETROL 067



PINK 037

JA4494 | MADISON

SHELL: 43% POLYESTER, 27% ACRYLIC,
15% POLYAMIDE, 10% WOOL, 5% ELASTANE

ONE SIZE

PACKAGED FOR SALE
3 PCS. PER COLOUR



AQUA 011



AVIO 007



BEIGE 031



BLACK 001



BLUE NAVY 006



FUXIA 024



IVORY 043



MED GREY 003



PETROL 067



PINK 037

JA4496 | NIAGARA

30 X 35 CM

SHELL: 43% POLYESTER, 27% ACRYLIC,
15% POLYAMIDE, 10% WOOL, 5% ELASTANE

PACKAGED FOR SALE
PER COLOUR



AQUA 011



AVIO 007



BEIGE 031



BLACK 001



BLUE NAVY 006



FUXIA 024



IVORY 043



MED GREY 003



PETROL 067



PINK 037

JA4495 | MONROE

SHELL: 43% POLYESTER, 27% ACRYLIC,
15% POLYAMIDE, 10% WOOL, 5% ELASTANE
POM POM: 100% POLYESTER

ONE SIZE

PACKAGED FOR SALE
3 PCS. PER COLOUR



AQUA 011



AVIO 007



BEIGE 031



BLACK 001



BLUE NAVY 006



FUXIA 024



IVORY 043



MED GREY 003



PETROL 067



PINK 037

JA4497 | MANHATTAN

SHELL: 43% POLYESTER, 27% ACRYLIC,
15% POLYAMIDE, 10% WOOL, 5% ELASTANE

ONE SIZE

PACKAGED FOR SALE
3 PCS. PER COLOUR



AVIO 007



BEIGE 031



BLACK 001



BLUE NAVY 006



MED GREY 003



PETROL 067

JA4465 | DONGHAI

SHELL: 98% POLYESTER, 2% ELASTANE

ONE SIZE

PACKAGED FOR SALE
3 PCS. PER COLOUR



BEIGE 031



BLACK 001



BLUE NAVY 006



BROWN 046



PINK 037

JA4502 | RECYCLED LUREX

SHELL: 58% POLYESTER, 22% VISCOSE,
20% POLYAMIDE
POM PON: 100% POLYESTER

ONE SIZE

PACKAGED FOR SALE
3 PCS. PER COLOUR



AVIO 007



BEIGE 031



BLACK 001



MED GREY 003



PINK 037



WHITE 005

JA4503 | RECYCLED LUREX GLOVE

SHELL: 58% POLYESTER, 22% VISCOSE,
20% POLYAMIDE

ONE SIZE

PACKAGED FOR SALE
3 PCS. PER COLOUR



AVIO 007



BEIGE 031



BLACK 001



MED GREY 003



PINK 037



WHITE 005

JA4504 | RECYCLED RHINESTONE

SHELL: 58% POLYESTER, 22% VISCOSE,
20% POLYAMIDE
INTERNAL: 100% POLYESTER

ONE SIZE

PACKAGED FOR SALE
3 PCS. PER COLOUR



BLACK 001



MED GREY 003



WHITE 005

JA4505 | RECYCLED RHINESTONE GLOVE

SHELL: 58% POLYESTER, 22% VISCOSE,
20% POLYAMIDE

ONE SIZE

PACKAGED FOR SALE
3 PCS. PER COLOUR



BLACK 001



MED GREY 003

JA4506 | RECYCLED DOUBLE POM

SHELL: 58% POLYESTER, 22% VISCOSE,
20% POLYAMIDE
POM PON: 100% POLYESTER

ONE SIZE

PACKAGED FOR SALE
3 PCS. PER COLOUR



BLACK 001



MED GREY 003



WHITE 005

JA4394 | GOLDEN GATE

SHELL: 55% ACRYLIC, 36% POLYESTER,
5% WOOL, 4% ELASTANE

ONE SIZE

PACKAGED FOR SALE
3 PCS. PER COLOUR



CARRY
OVER



AQUA 011



BLACK 001



IVORY 043



LILAC 029



MED GREY 003



MUD 018



PINK 037



YELLOW 026

JA4587 | TENDER

50 X 180 + 15 CM

SHELL: 100% POLYESTER

PACKAGED FOR SALE
PER COLOUR



AVIO 007



GRAPES 028



PETROL 067



YELLOW 026

JA4395 | GOLDEN GATE HEADBAND

13 X 21 CM

SHELL: 55% ACRYLIC, 36% POLYESTER,
5% WOOL, 4% ELASTANE

ONE SIZE

PACKAGED FOR SALE
3 PCS. PER COLOUR



AQUA 011



BLACK 001



IVORY 043

CARRY OVER



LILAC 029



MED GREY 003



MUD 018



PINK 037



YELLOW 026

JA4453 | GOLDEN GATE BERET

SHELL: 55% ACRYLIC, 36% POLYESTER,
5% WOOL, 4% ELASTANE

ONE SIZE

PACKAGED FOR SALE
3 PCS. PER COLOUR

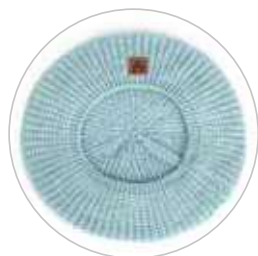
CARRY OVER



BLACK 001



IVORY 043



DETAIL



MED GREY 003



MUD 018

JA4425 | GOLDEN GATE SLEEVE

11 X 20 CM

SHELL: 55% ACRYLIC, 36% POLYESTER,
5% WOOL, 4% ELASTANE

ONE SIZE

PACKAGED FOR SALE
3 PCS. PER COLOUR



BLACK 001



IVORY 043



MED GREY 003



MUD 018



PINK 037

CARRY
OVER



JA4525 | GOLDEN GATE PERUVIAN

SHELL: 55% ACRYLIC, 36% POLYESTER,
5% WOOL, 4% ELASTANE

ONE SIZE

PACKAGED FOR SALE
3 PCS. PER COLOUR



BLACK 001



IVORY 043



PINK 037





JA4512-JA4452
JA4497-JA4495

JA4588 | BLANKET

50 X 185 + 15 CM

SHELL: 100% POLYESTER

PACKAGED FOR SALE
PER COLOUR



BLACK 001



GREEN 072



PINK 037

JA4452 | GOLDEN GATE CAP

SHELL: 55% ACRYLIC, 36% POLYESTER,
5% WOOL, 4% ELASTANE

ONE SIZE

PACKAGED FOR SALE
3 PCS. PER COLOUR

CARRY
OVER



AQUA 011



BLACK 001



GREEN 072



IVORY 043



LILAC 029



MED GREY 003



MUD 018



PINK 037



YELLOW 026

JA4454 | GOLDEN GATE LOOP

25 X 60 CM

SHELL: 55% ACRYLIC,
36% POLYESTER, 5% WOOL,
4% ELASTANE

PACKAGED FOR SALE
3 PCS. PER COLOUR

CARRY
OVER



BLACK 001



GREEN 072



IVORY 043



DETAIL



MED GREY 003



MUD 018



PINK 037



YELLOW 026



LILAC 029

JA4472 | CORTLAND

SHELL: 89% POLYESTER,
11% ELASTANE

ONE SIZE

PACKAGED FOR SALE
3 PCS. PER COLOUR



AVIO 007



BLACK 001



CAMEL 075

CARRY OVER



GRAPES 028



MED GREY 003

JA4348 | UTEC

SHELL: 47% POLYAMIDE,
47% WOOL, 6% POLYESTER

ONE SIZE

PACKAGED FOR SALE
3 PCS. PER COLOUR



AQUA 011



BEIGE 031



BLACK 001

CARRY OVER



BLUE NAVY 006



FUXIA 024



GRAPES 028



GREEN 072



IVORY 043



MUD 018

JA4589 | PLAIN

35 X 180 + 15 CM

SHELL: 100% POLYESTER

PACKAGED FOR SALE
PER COLOUR



BLACK 001



FUXIA 024



IVORY 043



MUD 018



TURQUOISE 009

JA4351 | HONEY BEE

SHELL: 100% POLYESTER
LINING: 100% POLYESTER

ONE SIZE

PACKAGED FOR SALE
3 PCS. PER COLOUR



BLACK 001



BLUE NAVY 006



BORDEAUX 066



BROWN 046



LILAC 029



MED GREY 003



MUD 018



YELLOW 026

CARRY OVER





JA4507-JA4508

JA4507 | KIRKENES

SHELL: 80% ACRYLIC, 20% WOOL
LINING: 100% POLYESTER

ONE SIZE

PACKAGED FOR SALE
3 PCS. PER COLOUR



BLACK 001



MED GREY 003



PINK 037



WHITE 005

JA4508 | KIRKENES SCARF

20 X 170 CM

SHELL: 80% ACRYLIC, 20% WOOL

3 PCS. PER COLOUR



BLACK 001



MED GREY 003



PINK 037



WHITE 005

JA4500 | SPANDAU

SHELL: 75% ACRYLIC, 15% WOOL,
10% POLYAMIDE

ONE SIZE

PACKAGED FOR SALE
3 PCS. PER COLOUR



BEIGE 031



BLACK 001



BLUE NAVY 006



FUXIA 024



GREEN 072



LILAC 029



MED GREY 003



ROYAL BLUE 051



WHITE 005



JA4494-JA4587
JA4500-JA4571

JA4571 | RISOR SCARF

35 X 190 CM

SHELL: 33% POLYESTER,
25% ACRYLIC, 21% WOOL,
21% ALPACA

PACKAGED FOR SALE
PER COLOUR



*Fine Italian
manufacture*



BROWN 046



MULTICOLOR 049



PINK 037

JA4509 | BRITZ

SHELL: 50% WOOL, 50% ACRYLIC

ONE SIZE

PACKAGED FOR SALE
3 PCS. PER COLOUR



BLACK 001



BLUE NAVY 006



MED GREY 003

JA4510 | BRITZ HEADBAND

10 X 26 CM

SHELL: 50% WOOL, 50% ACRYLIC

ONE SIZE

PACKAGED FOR SALE
3 PCS. PER COLOUR



BLACK 001



BLUE NAVY 006



MED GREY 003

JA4478 | ESSEX

SHELL: 89% POLYESTER,
11% ELASTANE

ONE SIZE

PACKAGED FOR SALE
3 PCS. PER COLOUR

CARRY
OVER



BLACK 001



MED GREY 003

JA4512 | KALLIO

SHELL: 50% ACRYLIC, 50% WOOL

ONE SIZE

PACKAGED FOR SALE
3 PCS. PER COLOUR



BLACK 001



BLUE NAVY 006



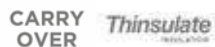
MED GREY 003

JA2022 | CRATER

SHELL: 100% ACRYLIC
LINING: 100% POLYESTER

ONE SIZE

PACKAGED FOR SALE
3 PCS. PER COLOUR



BLACK 001



BLUE NAVY 006



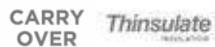
MED GREY 003

JA2010 | BRATAN

SHELL: 100% ACRYLIC
LINING: 100% POLYESTER

SIZE: EXTRA LARGE, LARGE,
MEDIUM, SMALL

PACKAGED FOR SALE
3 PCS. PER COLOUR AND SIZE



BLACK 001



BLUE NAVY 006



MED GREY 003

JA4151 | PORTOBELLO

SHELL: 100% ACRYLIC

ONE SIZE

PACKAGED FOR SALE
3 PCS. PER COLOUR

CARRY
OVER



AQUA 011



BEIGE 031



BLACK 001



BLUE NAVY 006



BORDEAUX 066



BROWN 046



DK GREY 002 002



FUXIA 024



LIME 033



LILAC 029



MID BLUE 074



PETROL 067



PINK 037



YELLOW 026



OIL 017

JA4202 | PERTH

SHELL: 96.7% ACRYLIC,
2.5% POLYAMIDE, 0.8% ELASTANE

ONE SIZE

PACKAGED FOR SALE
3 PCS. PER COLOUR

CARRY
OVER



BLACK 001



PEARL GREY 004

JA4325 | WADSPIRAL

SHELL: 100% COTTON

ONE SIZE

PACKAGED FOR SALE
3 PCS. PER COLOUR

CARRY
OVER



BLACK 001



BLUE NAVY 006

JA2023 | IMANDRA

33 X 22 CM

SHELL: 100% ACRYLIC

PACKAGED FOR SALE
3 PCS. PER COLOUR

CARRY
OVER



BLACK 001



BLUE NAVY 006



MED GREY 003

JA4514 | JORDAL

SHELL: 50% ACRYLIC, 50% POLYESTER
 LINING: 100% POLYESTER

ONE SIZE

PACKAGED FOR SALE
 3 PCS. PER COLOUR



BLACK 001



BLUE NAVY 006



PEARL GREY 004

JA4489 | CHEMUNG BEANIE

SHELL: 36% POLYESTER, 45% VISCOSE,
 19% POLYAMIDE

ONE SIZE

PACKAGED FOR SALE
 PER COLOUR

CARRY OVER

*Fine Italian
 manufacture*



BLACK 001



CAMEL 075



MED GREY 003



DETAIL

JA4490 | CHEMUNG LOOP

20X62 CM

SHELL: 36% POLYESTER, 45% VISCOSE,
 19% POLYAMIDE

PACKAGED FOR SALE
 PER COLOUR

CARRY OVER



BLACK 001



CAMEL 075



MED GREY 003

JA4124 | KALAMAJA

SHELL: 100% ACRYLIC

ONE SIZE

PACKAGED FOR SALE
3 PCS. PER COLOUR

CARRY
OVER



4 WAY
TO FIT



REVERSE



CAMEL 075



BLACK 001



BLUE NAVY 006



BORDEAUX 066



LIME 033



MILITARY 045



YELLOW 026

JA4316 | KALAMAJA LOOP

40 X 35 CM

SHELL: 100% ACRYLIC
 LINING: 100% POLYESTER
 APPLICATION: 100% POLYESTER

PACKAGED FOR SALE
 3 PCS. PER COLOUR

CARRY OVER



BLACK 001



BLUE NAVY 006



CAMEL 075



MILITARY 045



YELLOW 026

JA4293 | ENMORE

SHELL: 95% POLYESTER,
 5% ELASTANE
 LINING: 100% POLYESTER

ONE SIZE

PACKAGED FOR SALE
 3 PCS. PER COLOUR

CARRY OVER



BLACK 001

JG0127 | ODEON

SHELL: 95% COTTON, 5% ELASTANE

ONE SIZE

PACKAGED FOR SALE
3 PCS. PER COLOUR

CARRY
OVER



BLACK 001



BLUE NAVY 006



MED GREY 003



MILITARY 045

JA4315 | ODEON LOOP

16 X 32 CM

SHELL: 95% COTTON, 5% ELASTANE
LINING: 100% POLYESTER

PACKAGED FOR SALE
3 PCS. PER COLOUR

CARRY
OVER



BLACK 001



BLUE NAVY 006



MED GREY 003



MILITARY 045



3
2

JA4529-JA4530
JA4498-JA4499-JA4494

JA4498 | VALLILA

SHELL: 100% POLYAMIDE

ONE SIZE

PACKAGED FOR SALE
3 PCS. PER COLOUR



AVIO 007



BLACK 001



FUXIA 024



IVORY 043

JA4499 | VALLILA LOOP

30 X 60 CM

SHELL: 100% POLYAMIDE

PACKAGED FOR SALE
3 PCS. PER COLOUR



AVIO 007



BLACK 001



FUXIA 024



IVORY 043

JA4517 | MITTE

SHELL :45% POLYESTER, 37% ACRYLIC,
12% POLYAMIDE, 6% WOOL

ONE SIZE

PACKAGED FOR SALE
3 PCS. PER COLOUR



BLUE NAVY 006



BLACK 001



BORDEAUX 066



GRAPES 028



GREEN 072



IVORY 043

JA4590 | PIED DI POULE

65 X 180 CM

SHELL: 100% ACRYLIC

PACKAGED FOR SALE
PER COLOUR



BLACK 001



BRICK 016

JA4516 | VIKA

SHELL: 49% POLYESTER, 37% ACRYLIC,
12% POLYAMIDE, 6% WOOL
LINING:100% POLYESTER

ONE SIZE

PACKAGED FOR SALE
3 PCS. PER COLOUR



BLACK 001



BORDEAUX 066



GRAPES 028



IVORY 043

JA4515 | VALBY

SHELL: 45% POLYESTER, 37% ACRYLIC,
12% POLYAMIDE, 6% WOOL
LINING:100% POLYESTER

ONE SIZE

PACKAGED FOR SALE
3 PCS. PER COLOUR



BLACK 001



BLUE NAVY 006



BORDEAUX 066



GRAPES 028



GREEN 072



IVORY 043

JA4569 | HOLEN

50 X 200 CM

SHELL: 33% POLYESTER,
25% ACRYLIC, 21% WOOL,
21% ALPACA

PACKAGED FOR SALE
PER COLOUR



*Fine Italian
manufacture*



BLUE NAVY 006



BROWN 046



GRAPES 028

JA4476 | BRONX

SHELL: 100% POLYESTER
LINING: 100% POLYESTER

ONE SIZE

PACKAGED FOR SALE
3 PCS. PER COLOUR



BLACK 001



JJA4521-JA4523

JA4521 | BERG

SHELL: 57% ACRYLIC, 22% POLYESTER,
12% POLYAMIDE, 8% WOOL, 1% ELASTANE
LINING: 100% POLYESTER

ONE SIZE

PACKAGED FOR SALE
3 PCS. PER COLOUR



AVIO 007



BLACK 001



YELLOW 026

JA4523 | BERG HEADBAND

15 X 24 CM

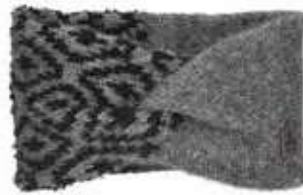
SHELL: 45% POLYESTER, 37% ACRYLIC,
12% POLYAMIDE, 6% WOOL

ONE SIZE

PACKAGED FOR SALE
3 PCS. PER COLOUR



AVIO 007



BLACK 001



YELLOW 026

JA4522 | BERG LOOP

28 X 23 CM

SHELL: 57% ACRYLIC, 22% POLYESTER, 12%
POLYAMIDE, 8% WOOL, 1% ELASTANE
LINING: 100% POLYESTER

PACKAGED FOR SALE
3 PCS. PER COLOUR



AVIO 007



BLACK 001



YELLOW 026

JA4518 | ASLE

SHELL: 45% POLYAMIDE, 39% ACRYLIC,
11% POLYESTER, 4% WOOL, 1% ELASTANE
LINING: 100% POLYESTER

ONE SIZE

PACKAGED FOR SALE
3 PCS. PER COLOUR



BLACK 001



MUD 018



PINK 037

JA4520 | ASLE HEADBAND

SHELL: 58% ACRYLIC, 22% POLYAMIDE,
13% POLYESTER, 6% WOOL, 1% ELASTANE

15 X 24 CM

ONE SIZE

PACKAGED FOR SALE
3 PCS. PER COLOUR



BLACK 001



MUD 018



PINK 037

JA4519 | ASLE LOOP

SHELL: 49% ACRYLIC, 39% POLYAMIDE,
11% POLYESTER, 3% WOOL, 1% ELASTANE
LINING: 100% POLYESTER

28 X 26 CM

PACKAGED FOR SALE
3 PCS. PER COLOUR



BLACK 001



MUD 018



PINK 037

JA4591 | DYED

40 X 180 + 15 CM

SHELL: 100% POLYESTER

PACKAGED FOR SALE
PER COLOUR



BLACK 001



BROWN 046



LILAC 029

JA4526 | SKATA

SHELL: 55% ACRYLIC, 36% POLYESTER,
5% WOOL, 4% ELASTANE

ONE SIZE

PACKAGED FOR SALE
3 PCS. PER COLOUR



CORAL 022



LILAC 029



PINK 037

JA4527 | SKATA SLEEVE

SHELL: 55% ACRYLIC, 36% POLYESTER,
5% WOOL, 4% ELASTANE

ONE SIZE

PACKAGED FOR SALE
3 PCS. PER COLOUR



CORAL 022



LILAC 029



PINK 037

JA4528 | SKATA SCARF

35 X 180 CM

SHELL: 55% ACRYLIC, 36% POLYESTER,
5% WOOL, 4% ELASTANE

PACKAGED FOR SALE
PER COLOUR



CORAL 022

LILAC 029



PINK 037



JJA4529-JA4530

JA4529 | ODDA

SHELL: 100% ACRYLIC

ONE SIZE

PACKAGED FOR SALE
3 PCS. PER COLOUR



BLUE NAVY 006



BROWN 046



WHITE 005

JA4530 | ODDA SCARF

22 X 180 CM

SHELL: 55% ACRYLIC

PACKAGED FOR SALE
PER COLOUR



BLUE NAVY 006



BROWN 046



WHITE 005

JA4531 | SPUI

SHELL: 69% ACRYLIC, 12% WOOL,
11% POLYESTER, 8% POLYAMIDE
LINING: 100% POLYESTER

ONE SIZE

PACKAGED FOR SALE
3 PCS. PER COLOUR



BLACK 001



BLUE NAVY 006



MED GREY 003

JA4570 | PARIOLI SCARF

60 X 180 CM

SHELL: 65% ACRYLIC, 30% WOOL,
5% POLYESTER

PACKAGED FOR SALE
PER COLOUR



*Fine Italian
manufacture*



BLUE NAVY 006



MILITARY 045

JA4468 | WEINAN

SHELL: 100% POLYESTER
LINING: 100% POLYESTER

SIZE: LARGE, EXTRA LARGE

PACKAGED FOR SALE
3 PCS. PER COLOUR AND SIZE

**CARRY
OVER**



BLACK 001

JA4534 | ASKIM

SHELL: 75% ACRYLIC, 15% WOOL,
10% POLYAMIDE
LINING: 100% POLYESTER

ONE SIZE

PACKAGED FOR SALE
3 PCS. PER COLOUR



BLACK 001



CAMEL 075



MED GREY 003

JA4535 | ASKIM LOOP

65 X 30 CM

SHELL: 75% ACRYLIC, 15% WOOL,
10% POLYAMIDE

PACKAGED FOR SALE
3 PCS. PER COLOUR



BLACK 001



CAMEL 075



MED GREY 003

JA4469 | RUNYANG

SHELL: 100% POLYESTER

SIZE: EXTRA LARGE, LARGE

PACKAGED FOR SALE
3 PCS. PER COLOUR AND SIZE

CARRY
OVER



BLACK 001

JA4536 | MOLDE

SHELL: 75% ACRYLIC, 15% WOOL,
10% POLYAMIDE
LINING: 100% POLYESTER

ONE SIZE

PACKAGED FOR SALE
3 PCS. PER COLOUR



BLACK 001



CAMEL 075



MED GREY 003

JA4537 | MOLDE SCARF

25 X 180 CM

SHELL: 75% ACRYLIC, 15% WOOL,
10% POLYAMIDE
LINING: 100% POLYESTER

PACKAGED FOR SALE
3 PCS. PER COLOUR



BLACK 001



CAMEL 075



MED GREY 003

JA4492 | ERIE BASEBALL

SHELL: 85% POLYESTER, 15% ACRYLIC

ONE SIZE

PACKAGED FOR SALE
3 PCS. PER COLOUR



DETAIL



BLACK 001



BROWN 046



GRAPES 028

JA4491 | ERIE FLAT CAP

SHELL: 85% POLYESTER, 15% ACRYLIC

SIZE: MEDIUM, LARGE

PACKAGED FOR SALE
3 PCS. PER COLOUR AND SIZE



BLACK 001



BROWN 046

CARRY
OVER



JA4583-JA4581
JA4548

JA4228 | CHELSEA AVIATOR

SHELL: 100% POLYESTER
 LINING: 100% POLYESTER

ONE SIZE

PACKAGED FOR SALE
 3 PCS. PER COLOUR

CARRY OVER



BLACK 001



CAMEL 075



GRAPES 028



PINK 037



STONE 019



WHITE 005

JA4276 | CHELSEA BUSBY

SHELL: 100% POLYESTER
 LINING: 100% POLYESTER

ONE SIZE

PACKAGED FOR SALE
 3 PCS. PER COLOUR

CARRY OVER



BLACK 001



WHITE 005

JA4353 | HUMBER

SHELL: 100% POLYESTER
 LINING: 100% POLYESTER
 PALM: 80% WOOL 20% POLYESTER
 CUFF: 100% POLYESTER

ONE SIZE

PACKAGED FOR SALE
 3 PCS. PER COLOUR

CARRY OVER



BLACK 001

JA4279 | TRIUMPH

SHELL: 100% POLYESTER
 LINING: 100% POLYESTER

ONE SIZE

PACKAGED FOR SALE
 3 PCS. PER COLOUR

CARRY OVER



BLACK 001



PINK 037



IVORY 043



GRAPES 028



CAMEL 075

JA4433 | STARI MOST

SHELL: 100% POLYESTER
 PALM: 80% POLYESTER, 20% COTTON
 CUFF: 100% POLYESTER

ONE SIZE

PACKAGED FOR SALE
 3 PCS. PER COLOUR

CARRY OVER



BLACK 001



CAMEL 075

JA4365 | HARBOUR

20 X 120 CM

SHELL: 100% POLYESTER
APPLICATION: 100% ACRYLIC

PACKAGED FOR SALE
3 PCS. PER COLOUR



BLACK 001



BRICK 016



ICE 013



MUD 018



GREEN 072

JA4350 | CHEMOSPHERE

SHELL: 100% POLYESTER
 CUFF: 100% POLYESTER

ONE SIZE

PACKAGED FOR SALE
 3 PCS. PER COLOUR

CARRY
 OVER



BLACK 001



MED GREY 003

JA4370 | HONEY BEE BUCKET

SHELL: 100% POLYAMIDE
 LINING: 100% POLYESTER
 FILLING: 100% POLYESTER

ONE SIZE

PACKAGED FOR SALE
 3 PCS. PER COLOUR AND SIZE



BLACK 001



STONE 019

JA4371 | HONEY BEE AVIATOR

SHELL: 100% POLYAMIDE
 LINING: 100% POLYESTER
 FILLING: 100% POLYESTER

ONE SIZE

PACKAGED FOR SALE
 3 PCS. PER COLOUR



BLACK 001



STONE 019



JJA4567-JA4573
JA4588

JA4543 | HAMINA GLOVE

SHELL: 95% POLYESTER, 5% ELASTAN

ONE SIZE

PACKAGED FOR SALE
PER COLOUR



BLACK 001



MUD 018

JA4352 | UFO HOUSE

SHELL: 100% POLYESTER
LINING: 75% COTTON,
17% POLYESTER 8% ELASTAN

ONE SIZE

PACKAGED FOR SALE
3 PCS. PER COLOUR



BLACK 001



CAMEL 075



GRAPES 028

JA4575 | GALLES

SHELL: 100% POLYESTER
 LINING: 100% POLYESTER
 PEAK: 94% POLYESTER, 6% ELASTANE

ONE SIZE

PACKAGED FOR SALE
 PER COLOUR

*Fine Italian
 manufacture*



BLACK 001

JA4576 | GALLES BUCKET

SHELL: 100% POLYESTER
 LINING: 100% POLYESTER

ONE SIZE

PACKAGED FOR SALE
 PER COLOUR

*Fine Italian
 manufacture*



BLACK 001

JA4572 | HUSUM

SHELL: 100% WOOL

ONE SIZE

PACKAGED FOR SALE
 PER COLOUR



*Fine Italian
 manufacture*



BLACK 001

JA4546 | CORDUROY

SHELL: 100% POLYESTER

ONE SIZE

PACKAGED FOR SALE 3 PCS.
 PER COLOUR AND SIZE



BLACK 001



CAMEL 075

JA4545 | CORDUROY GLOVE

SHELL: 100% POLYESTER
 PALM: 95% POLYESTER, 5% ELASTAN

ONE SIZE

PACKAGED FOR SALE 3 PCS.
 PER COLOUR AND SIZE



BLACK 001



CAMEL 075

JA4577 | HALDEN

SHELL: 100% POLYESTER
 LINING: 100% POLYESTER

ONE SIZE

PACKAGED FOR SALE
 PER COLOUR

*Fine Italian
 manufacture*



BLACK 001



MUD 018

JA4573 | AMAGER

SHELL: 70% WOOL,
 30% POLYESTER
 LINING: 100% POLYESTER

ONE SIZE

PACKAGED FOR SALE
 PER COLOUR

*Fine Italian
 manufacture*



GREEN 072



PINK 037

JA4574 | AMAGER BUCKET

SHELL: 70% WOOL, 30% POLYESTER
 LINING: 100% POLYESTER

ONE SIZE

PACKAGED FOR SALE
 PER COLOUR

*Fine Italian
 manufacture*



GREEN 072



PINK 037





JA4549-JA4547

JA4548 | HOLMEN

SHELL: 100% POLYESTER
 PEAK: 100% POLYESTER

ONE SIZE

PACKAGED FOR SALE
 3 PCS. PER COLOUR AND SIZE



CAMEL 075



GREEN 072

JA4549 | HOLMEN BUCKET

SHELL: 100% POLYESTER

ONE SIZE

PACKAGED FOR SALE
 3 PCS. PER COLOUR AND SIZE



CAMEL 075



GREEN 072

JA4547 | HOLMEN GLOVE

SHELL: 100% POLYESTER
 PALM: 95% POLYESTER, 5% ELASTAN

ONE SIZE

PACKAGED FOR SALE
 3 PCS. PER COLOUR AND SIZE



CAMEL 075



GREEN 072

JA4564 | SAUDA

SHELL: 100% POLYESTER
LINING: 100% POLYESTER

ONE SIZE

PACKAGED FOR SALE
PER COLOUR

*Fine Italian
manufacture*



BLACK 001



MUD 018



WHITE 005

JA4560 | SAUDA GLOVE

SHELL: 89% POLYESTER
PALM: 89% POLYESTER, 11% ELASTAN

ONE SIZE

PACKAGED FOR SALE
PER COLOUR

*Fine Italian
manufacture*



BLACK 001



MUD 018



WHITE 005

JA4565 | DRAMMEN

SHELL: 67% ACRYLIC, 33% POLYESTER
LINING: 100% POLYESTER
PEAK: 60% POLYURETHANE, 34% VISCOSE,
6% POLYESTER

ONE SIZE

PACKAGED FOR SALE
PER COLOUR

*Fine Italian
manufacture*



BLACK 001



CAMEL 075



GREEN 072

JA4561 | DRAMMEN GLOVE

BACK: 67% ACRYLIC, 33% POLYESTER
PALM: 70% POLYESTER, 27% POLYURETHANE,
3% ELASTANE

ONE SIZE

PACKAGED FOR SALE
PER COLOUR

*Fine Italian
manufacture*



BLACK 001



CAMEL 075



GREEN 072

JA4566 | NARVIK

SHELL: 76% POLYESTER, 13% ACRYLIC,
11% WOOL
LINING: 100% POLYESTER
PEAK: 50% WOOL, 20% ACRYLIC,
20% POLYESTER, 10% OTHER FIBERS

ONE SIZE

PACKAGED FOR SALE
PER COLOUR



BLACK 001

BLUE NAVY 006

*Fine Italian
manufacture*

JA4567 | NARVIK BUCKET

SHELL: 76% POLYESTER, 13% ACRYLIC,
11% WOOL
LINING: 100% POLYESTER

ONE SIZE

PACKAGED FOR SALE
PER COLOUR



BLACK 001

BLUE NAVY 006

*Fine Italian
manufacture*

JA4562 | NARVIK GLOVE

BACK: 76% POLYESTER, 13% ACRYLIC,
11% WOOL
PALM: 89% POLYESTER, 11% ELASTANE

ONE SIZE

PACKAGED FOR SALE
PER COLOUR



BLACK 001

BLUE NAVY 006

*Fine Italian
manufacture*

JA4542 | VALBY

BACK: 100% POLYESTER
PALM: 95% POLYESTER, 5% ELASTAN

ONE SIZE

PACKAGED FOR SALE
PER COLOUR AND SIZE



BLACK 001



BLUE NAVY 006



MUD 018

JA4541 | VALBY GLOVE

SHELL: 100% POLYESTER

SIZE: EXTRA LARGE, LARGE, MEDIUM

PACKAGED FOR SALE
PER COLOUR AND SIZE



BLACK 001



BLUE NAVY 006



MUD 018

JA4583 | MOABIT

SHELL: 60% WOOL, 20% ACRYLIC,
20% POLYESTER
LINING: 100% POLYESTER

SIZE: EXTRA LARGE, LARGE, MEDIUM

PACKAGED FOR SALE
PER COLOUR AND SIZE



BLACK 001



BLUE NAVY 006



BROWN 046



GREEN 072

*Fine Italian
manufacture*

JA4579 | ZUIDAS FLAT CAP

SHELL: 30% COTTON, 30% POLYESTER,
20% ACRYLIC, 15% WOOL, 4% OTHER FIBERS,
1% ELASTANE
LINING: 100% POLYESTER

SIZE: EXTRA LARGE, LARGE, MEDIUM

PACKAGED FOR SALE
PER COLOUR AND SIZE



*Fine Italian
manufacture*



BLUE NAVY 006

JA4581 | FINGLAS CAP

SHELL: 80% COTTON, 20% POLYESTER
LINING: 100% POLYESTER
PEAK: 94% POLYESTER, 6% ELASTANE

ONE SIZE

PACKAGED FOR SALE
PER COLOUR AND SIZE



*Fine Italian
manufacture*



BLUE NAVY 006



BROWN 046

JA4582 | FINGLAS FLAT CAP

SHELL: 80% COTTON, 20% POLYESTER
LINING: 100% POLYESTER

SIZE: EXTRA LARGE, LARGE, MEDIUM

PACKAGED FOR SALE
PER COLOUR AND SIZE



*Fine Italian
manufacture*



BLUE NAVY 006



BROWN 046

JA4578 | ZUIDAS CAP

SHELL: 30% COTTON, 30% POLYESTER,
20% ACRYLIC, 15% WOOL, 4% OTHER FIBERS,
1% ELASTANE
LINING: 100% POLYESTER

SIZE: EXTRA LARGE, LARGE, MEDIUM

PACKAGED FOR SALE
PER COLOUR AND SIZE



*Fine Italian
manufacture*



BLUE NAVY 006

JA4580 | NERISTAN

SHELL: 50% ACRYLIC, 25% POLYESTER,
20% WOOL, 5% OTHER FIBERS
LINING: 100% POLYESTER

SIZE: EXTRA LARGE, LARGE, MEDIUM

PACKAGED FOR SALE
PER COLOUR AND SIZE



*Fine Italian
manufacture*



BROWN 046

JA4584 | OSDORP

SHELL: 40% ACRYLIC, 30% WOOL,
20% POLYESTER, 10% OTHER FIBERS
LINING: 100% POLYESTER

ONE SIZE

PACKAGED FOR SALE
PER COLOUR AND SIZE



*Fine Italian
manufacture*



BLUE NAVY 006



BORDEAUX 066

JA4585 | RIB

SHELL: 100% POLYESTER
LINING: 100% POLYESTER

SIZE: EXTRA LARGE, LARGE, MEDIUM

PACKAGED FOR SALE
PER COLOUR AND SIZE

*Fine Italian
manufacture*



BLACK 001



BROWN 046

JA4485 | DUTCHESS

SHELL: 100% POLYESTER

SIZE: LARGE, MEDIUM

PACKAGED FOR SALE
PER COLOUR AND SIZE



BEIGE 031



MED GREY 003

JA4375 | CHARLES PATCH

LINING: 100% POLYESTER
 SHELL 1: 70% POLYESTER, 30% WOOL S
 HELL 2: 100% POLYESTER

ONE SIZE

PACKAGED FOR SALE
 3 PCS. PER COLOUR



BLACK 001



BLUE NAVY 006



BROWN 046



DETAIL

JA4378 | CHARLES FLAT

SHELL: 100% POLYESTER
 LINING: 100% POLYESTER

ONE SIZE

PACKAGED FOR SALE
 3 PCS. PER COLOUR



DETAIL



BLACK 001



BEIGE 031

JA4356 | THE UFO HOUSE BUCKET

SHELL: 100% POLYAMIDE
 LINING: 95% POLYESTER, 5% ELASTANE

SIZE: LARGE, MEDIUM

PACKAGED FOR SALE
 3 PCS. PER COLOUR

CARRY OVER



BLACK 001



DETAIL



JA4584-JA4578



OUTDOOR
DNA

Apple 02



JA2156-JA2157
JA2158

JA2156 | KERLING BEANIE

SHELL: 71% ACRYLIC, 19% WOOL,
9% POLYAMIDE, 1% ELASTANE
LINING: 100% POLYESTER

ONE SIZE

PACKAGED FOR SALE
3 PCS. PER COLOUR



FLEECE
BAND



WOOL



BLACK 001



BLUE NAVY 006



WHITE 005

JA2162 | TEDDY FLEECE

28 X 34 CM

SHELL: 100% POLYESTER

PACKAGED FOR SALE
3 PCS. PER COLOUR



TEDDY
FLEECE



Oeko-TEX®
STANDARD 100



AVIO 007



BLACK 001



BROWN 046



GREEN 072



IVORY 043



PINK 037

JA2159 | LOFOTEN BEANIE

SHELL: 50% ACRYLIC, 50% POLYESTER
LINING: 100% POLYESTER

ONE SIZE

PACKAGED FOR SALE
3 PCS. PER COLOUR



FLEECE
BAND



RECYCLED
FABRIC



BLACK 001



BLUE NAVY 006



BROWN 046

JA2135 | PORDOI BEANIE STRIPES

SHELL: 50% ACRYLIC, 50% WOOL
LINING: 100% POLYESTER

ONE SIZE

PACKAGED FOR SALE
3 PCS. PER COLOUR

CARRY
OVER



MERINO
WOOL



FLEECE
BAND



BLACK 001



BORDEAUX 066



CAMEL 075



FUXIA 024



GRAPES 028



LT BLUE 077



RED 021



ROYAL BLUE 051



TANGERINE 025



YELLOW 026



JA2146 | LAGAZUOI BEANIE

SHELL: 50% ACRYLIC, 50% POLYESTER
LINING: 100% POLYESTER

ONE SIZE

PACKAGED FOR SALE
3 PCS. PER COLOUR



BLACK 001



FUXIA 024



MED GREY 003

JA2147 | LAGAZUOI HEADBAND

SHELL: 50% ACRYLIC, 50% POLYESTER
LINING: 100% POLYESTER

ONE SIZE

PACKAGED FOR SALE
3 PCS. PER COLOUR



BLACK 001



FUXIA 024



MED GREY 003

JPP0087 | DISPLAY BELT



JA2148 | LAGAZUOI BELT

BUCKLE: 100% POLYOXYMETHYLENE
BELT: 90% POLYESTER, 10% ELASTANE

PACKAGED FOR SALE
3 PCS. PER COLOUR

CARRY
OVER



BLACK 001



FUXIA 024



MED GREY 003



PETROL 067



DISPLAY

JA2149 | GRINDELWALD BELT

BUCKLE: 100% POLYOXYMETHYLENE
BELT: 90% POLYESTER, 10% ELASTANE

PACKAGED FOR SALE
3 PCS. PER COLOUR

CARRY
OVER



DK GREY 002



FUXIA 024



WHITE 005



DISPLAY

JA2150 | ALPS BELT

BUCKLE: 100% POLYOXYMETHYLENE
BELT: 90% POLYESTER, 10% ELASTANE

PACKAGED FOR SALE
3 PCS. PER COLOUR

CARRY
OVER



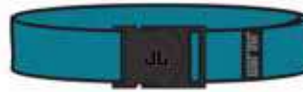
BLACK 001



FUXIA 024



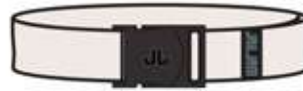
MED GREY 003



PETROL 067



GREEN 072



WHITE 005



DISPLAY

JA2151 | MATTERHORN BELT

BUCKLE: 100% POLYOXYMETHYLENE
BELT: 90% POLYESTER, 10% ELASTANE

PACKAGED FOR SALE
3 PCS. PER COLOUR

CARRY
OVER



MILITARY 045



DISPLAY

JA2155 | SHETLAND

SHELL: 50% ACRYLIC, 50% WOOL
LINING: 100% POLYESTER

ONE SIZE

PACKAGED FOR SALE
3 PCS. PER COLOUR



BLACK 001



FUXIA 024



GREEN 072



RED 021



BLUE NAVY 006



IVORY 043



JJA2155

JA2157 | MERIDA

SHELL: 80% ACRYLIC, 20% WOOL
LINING: 100% POLYESTER

ONE SIZE

PACKAGED FOR SALE
3 PCS. PER COLOUR



BLACK 001



BLUE NAVY 006



CAMEL 075



MED GREY 003

JA2158 | MERIDA SCARF

25 X 180 CM

SHELL: 80% ACRYLIC, 20% WOOL

PACKAGED FOR SALE
3 PCS. PER COLOUR



BLACK 001



BLUE NAVY 006



CAMEL 075



MED GREY 003

JA2140 | VANOISE

SHELL: 100% ACRYLIC
LINING: 100% POLYESTER

ONE SIZE

PACKAGED FOR SALE
3 PCS. PER COLOUR



BLACK 001



WHITE 005

JA2141 | TITLIS BEANIE

SHELL: 100% ACRYLIC
LINING: 100% POLYESTER

ONE SIZE

PACKAGED FOR SALE
3 PCS. PER COLOUR



BLACK 001

JA2160 | TIBET BEANIE

SHELL: 100% ACRYLIC
LINING: 100% POLYESTER

ONE SIZE

PACKAGED FOR SALE
3 PCS. PER COLOUR



BLACK 001



GRAPES 028



IVORY 043

JA2138 | GENTIN

SHELL: 47% POLYESTER,
37% ACRYLIC, 16% WOOL
LINING: 100% POLYESTER
POM PON: 100% ACRYLIC

ONE SIZE

PACKAGED FOR SALE
3 PCS. PER COLOUR



APPLE 014



AQUA 011



BLACK 001



FUXIA 024

JA2139 | ALBA

SHELL: 35% POLYAMIDE, 35% WOOL,
30% POLYESTER
LINING: 100% POLYESTER
POM PON: 100% ACRYLIC

ONE SIZE

PACKAGED FOR SALE
3 PCS. PER COLOUR



AQUA 011



BLACK 001



WHITE 005

JA2137 | SECEDA

SHELL: 100% ACRYLIC
LINING: 100% POLYESTER
POM PON: 80% POLYESTER, 20% ACRYLIC

ONE SIZE

PACKAGED FOR SALE
3 PCS. PER COLOUR



FULL FLEECE



PELLUCHE

CARRY OVER



AQUA 011



BLACK 001



FUXIA 024



LILAC 029



LIME 033



PINK 037



RED 021



TANGERINE 025



WHITE 005

JA2154 | SECEDA NECKWARMER

SHELL: 100% ACRYLIC
LINING: 100% POLYESTER

PACKAGED FOR SALE
3 PCS. PER COLOUR



AQUA 011



BLACK 001



FUXIA 024



LILAC 029



LIME 033



PINK 037



RED 021



TANGERINE 025



WHITE 005

JA2116 | KEITELE

SHELL: 93% ACRYLIC, 7% WOOL
LINING: 100% POLYESTER

ONE SIZE

PACKAGED FOR SALE
3 PCS. PER COLOUR



CARRY
OVER



APPLE 014



BEIGE 031



BLACK 001



FUXIA 024



ROYAL BLUE 051



TANGERINE 025

JA2003 | ATHABASCA

SHELL: 70% ACRYLIC, 30% WOOL
LINING: 100% POLYESTER

ONE SIZE

PACKAGED FOR SALE
3 PCS. PER COLOUR



CARRY
OVER



WHITE 005



MED GREY 003



BLACK 001



FUXIA 024



RED 021



TANGERINE 025



TURQUOISE 009



GREEN 072



ROYAL BLUE 051



BLUE NAVY 006



EMERALD 020



LILAC 029



LIME 033



PINK 037

JA2142 | LAYET

12 X 26 CM

SHELL: 70% ACRYLIC, 30% WOOL
LINING: 100% POLYESTER

PACKAGED FOR SALE
3 PCS. PER COLOUR



CARRY
OVER



WHITE 005



MED GREY 003



BLACK 001



FUXIA 024



RED 021



TURQUOISE 009



GREEN 072



ROYAL BLUE 051



BLUE NAVY 006



EMERALD 020



LILAC 029



LIME 033



PINK 037

JA2145 | ALPS BEANIE

SHELL: 70% ACRYLIC, 30% WOOL
LINING: 100% POLYESTER

ONE SIZE

PACKAGED FOR SALE
3 PCS. PER COLOUR



CARRY
OVER



WHITE 005



MED GREY 003



BLACK 001



FUXIA 024



RED 021



TANGERINE 025



TURQUOISE 009



GREEN 072



ROYAL BLUE 051



BLUE NAVY 006



EMERALD 020



LILAC 029

JAILJAM
WE BELONG OUTSIDE

GO TO THE PLACE

**YOU FEEL
MOST
ALIVE**

AND OUR ACCESSORIES WILL BE
YOUR ADVENTURE COMPANY



OUTDOOR

Do you like outdoor life, are you an active person who loves make always new experiences?

Carambola proposes technical, functional and handy accessories. they protect you from cold, are reflective and equipped with windproof inserts.

The minimal design identifies carambola accessories making them ideal for sport clothing and perfect for any outdoor activity.

03

carambola

JC0028 | STRETCH BEANIE

SHELL: 95% POLYESTER, 5% ELASTANE

ONE SIZE

PACKAGED FOR SALE
3 PCS. PER COLOUR

280 GR. 
SOFT

 **CARRY OVER**





BLACK 001



BLUE NAVY 006



DK GREY 002



WHITE 005

JC0029 | STRETCH RING

20 X 25 CM

SHELL: 95% POLYESTER, 5% ELASTANE

PACKAGED FOR SALE
3 PCS. PER COLOUR

280 GR. 
SOFT

 **CARRY OVER**



APPLE 014



AVIO 007



BLACK 001



BLUE NAVY 006



DK GREY 002



FUXIA 024



RED 021



PINK 037



ROYAL BLUE 051



TANGERINE 025



WHITE 005



YELLOW 026

JC0030 | STRETCH BAND

11 X 25 CM

SHELL: 95% POLYESTER, 5% ELASTANE

PACKAGED FOR SALE
3 PCS. PER COLOUR

280 GR. **S**
SOFT

4 WAY STRETCH
CARRY OVER



AVIO 007



PINK 037

RED 021

WHITE 005



BLACK 001

BLUE NAVY 006

DK GREY 002

FUXIA 024

JC0074 | STRETCH GLOVE

SHELL: 95% POLYESTER, 5% ELASTANE

SIZE: SMALL, MEDIUM,
LARGE, EXTRA LARGE

PACKAGED FOR SALE
3 PCS. PER COLOUR AND SIZE

280 GR. **S**
SOFT

4 WAY STRETCH
CARRY OVER



BLACK 001



BLUE NAVY 006



DK GREY 002

JC0070 | STRETCH RING DRAW STRING

26 X 26 CM

SHELL: 95% POLYESTER, 5% ELASTANE

PACKAGED FOR SALE
3 PCS. PER COLOUR

280 GR. **S**
SOFT

4 WAY STRETCH
CARRY OVER



BLACK 001



BLUE NAVY 006



DK GREY 002



FUXIA 024



WHITE 005



DETAIL

JC0022 | FUR RING

25 X 26 CM

SHELL: 100% POLYESTER
LINING: 100% POLYESTERPACKAGED FOR SALE
3 PCS. PER COLOUR**CARRY
OVER**

APPLE 014



BLACK 001



FUXIA 024



RED 021



TURQUOISE 009

JC0182 | PATCHWORK LOOP

25 X 25 CM

SHELL 1: 95% POLYESTER, 5% ELASTANE
SHELL 2: 100% POLYESTER
SHELL 3: 100% POLYESTERPACKAGED FOR SALE
3 PCS. PER COLOUR

MED GREY 003

JC0194 | EVIDENCE BEANIESHELL: 85% ACRYLIC, 15% POLYESTER
LINING: 100% POLYESTER

ONE SIZE

PACKAGED FOR SALE
3 PCS. PER COLOUR**CARRY
OVER**

BLACK 001

JC0159 | EVIDENCE LOOP

27 X 23 CM

SHELL: 70% ACRYLIC, 30% POLYESTER
LINING: 100% POLYESTERPACKAGED FOR SALE
3 PCS. PER COLOUR**CARRY
OVER**

BLACK 001

JC0054 | INNER HELMET

SHELL: 90% POLYESTER,
10% ELASTANE

SIZE: MEDIUM, LARGE

PACKAGED FOR SALE
3 PCS. PER COLOUR AND SIZE

180 GR. **S**
SOFT



CARRY OVER



BLACK 001

JC0055 | INNER GLOVE

SHELL: 90% POLYESTER,
10% ELASTANE

SIZE: SMALL, MEDIUM, LARGE,
EXTRA LARGE

PACKAGED FOR SALE
3 PCS. PER COLOUR AND SIZE

180 GR. **S**
SOFT



CARRY OVER



BLACK 001

JC0200 | INNER GLOVE

SHELL: 95% POLYESTER,
5% ELASTANE

SIZE: SMALL, MEDIUM,
LARGE, EXTRA LARGE

PACKAGED FOR SALE
3 PCS. PER COLOUR

DEKO-TEX®
STANDARD 100 **S**
SOFT



CARRY OVER



BLACK 001



DETAIL

JC0056 | INNER BALACLAVA

SHELL: 90% POLYESTER,
10% ELASTANE

ONE SIZE

PACKAGED FOR SALE
3 PCS. PER COLOUR

180 GR. **S**
SOFT



CARRY OVER



BLACK 001



HOW TO FIT

JC0072 | STRETCH GLOVE PERFORMANCE

SHELL: 50% COTTON, 45% POLYESTER, 5% ELASTANE
 PALM: 100% POLYURETHANE

SIZE: SMALL, MEDIUM, LARGE, EXTRA LARGE

PACKAGED FOR SALE
 3 PCS. PER COLOUR AND SIZE

380 GR.



CARRY OVER



BLACK 001



DETAIL

JC0165 | GRIP GLOVES

SHELL: 95% POLYESTER, 5% ELASTANE

SIZE: EXTRA SMALL, SMALL, MEDIUM, LARGE

PACKAGED FOR SALE
 3 PCS. PER COLOUR



CARRY OVER



BLACK 001



DETAIL

JC0192 | SILIC GLOVES

SHELL: 92% POLYESTER, 8% ELASTANE

SIZE: EXTRA LARGE, LARGE, MEDIUM

PACKAGED FOR SALE
 3 PCS. PER COLOUR AND SIZE



CARRY OVER



BLACK 001



DETAIL



ANTIMICROBIAL PROTECTION ISO 20743 AND ISO 18184

The fabric technology HeiQ Viroblock protects the multifunctional loop from microbes and germs. HeiQ Viroblock is included in the list of Approved Active Chemical products of OEKOTEX after being assessed as harmless for human health if it is used correctly according to product safety standards.

Treated styles with HeiQ Viroblock are compliant with the European Biocide Products Regulation and the European Reach Regulation, the US Federal Insect Fungicide and Rodenticide Act (FIFRA), Consumer Chemical Products and Biocides Safety Act in south korea (K-BPR) and the relevant regulations in Japan.

HeiQ Viroblock treatments holds up to 10 washes at 60° C.

“ HEIQ, VIROBLOCK and HEIQ VIROBLOCK are trademark(s) or registeRed 021 trademark(s) and properties of HeiQ Materials AG. The use of these trademark(s) is subject to approval from HeiQ. ”

JC0175 | SOLID MULTIFUNCTIONAL TEC

42X24 CM

SHELL: 91% POLYESTER,
9% ELASTANE

PACKAGED FOR SALE
PER COLOUR



*Fine Italian
manufacture*



BLACK 001



BLACK 001



BLUE NAVY 006



LIME 033



RED 021

JC0164 | MULTIFUNCTIONAL TEC

42X24 CM

SHELL: 91% POLYESTER,
9% ELASTANE

PACKAGED FOR SALE
PER COLOUR

180 GR.



CARRY
OVER



HOW TO FIT

*Fine Italian
manufacture*



BLACK 001



BORDEAUX 066



DK GREY 002



EMERALD 020



GREEN 072



MILITARY 045



MULTICOLOR 049

JC0177 | LIGHT BAND

10X24 CM

SHELL: 80% POLYESTER,
20% ELASTANE

ONE SIZE

PACKAGED FOR SALE
3 PCS. PER COLOUR



**CARRY
OVER**

*Fine Italian
manufacture*



BLACK 001



RED 021



BORDEAUX 066



STRAWBERRY 023



DK GREY 002



TURQUOISE 009



LIME 033



YELLOW 026



MED GREY 003

JC0150 | GOGGLE SLEEVE

SHELL: 100% POLYESTER

PACKAGED FOR SALE
3 PCS. PER COLOUR



BLACK 001



MULTICOLOR 049



PEARL GREY 004



RED 021



AVIO 007



BEIGE 031



MILITARY



WHITE 005



APPLE 014



STONE 019



JC0199 | WINDPROOF BALACLAVA

SHELL: 90% POLYESTER,
10% ELASTANE
FRONT: 100% POLYESTER

ONE SIZE

PACKAGED FOR SALE
3 PCS. PER COLOUR



CARRY
OVER



HOW TO FIT



BLACK 001

JC0044 | WINDPROOF MASK

SHELL: 100% POLYESTER

ONE SIZE

PACKAGED FOR SALE
3 PCS. PER COLOUR



CARRY
OVER



BLACK 001

JC0191 | STRETCH WINDPROOF GLOVES

SHELL: 95% POLYESTER, 5% ELASTAN

SIZE: MEDIUM, LARGE

PACKAGED FOR SALE
3 PCS. PER COLOUR AND SIZE



BLACK 001



DETAIL

JC0197 | PROOF GLOVE

SHELL: 95% POLYESTER, 5% ELASTAN
CUFF: 100% POLYESTER

SIZE: MEDIUM, LARGE, EXTRA LARGE

PACKAGED FOR SALE
3 PCS. PER COLOUR AND SIZE



BLACK 001



DETAIL

JC0167 | PROOF LADY GLOVES

SHELL: 95% POLYESTER,
5% ELASTANE
LINING: 100% POLYESTER

SIZE: MEDIUM, SMALL

PACKAGED FOR SALE
3 PCS. PER COLOUR AND SIZE



BLACK 001



DETAIL

JC0198 | SMOOTH GLOVE

SHELL: 100% POLYURETHANE
 LINING: 100% POLYESTER
 CUFF: 100% POLYESTER

SIZE: SMALL, MEDIUM, LARGE,
 EXTRA LARGE

PACKAGED FOR SALE
 3 PCS. PER COLOUR AND SIZE



BLACK 001



DETAIL

JC0190 | OUTDOOR GLOVES

SHELL: 95% POLYESTER, 5% ELASTANE
 LINING: 100% POLYESTER
 PALM: 100% POLYURETHANE

EXTRA LARGE, LARGE, MEDIUM

PACKAGED FOR SALE
 3 PCS. PER COLOUR



BLACK 001



DETAIL

LANA MERINOS

100% natural fiber, wool is renewable and biodegradable. Its production is sustainable, and after decommissioning it re-enters the natural cycle of decomposition.

THERMOREGULATING

Thanks to its insulating and temperature-regulating properties, wool keeps body heat, so it warms you at low temperatures outside and guarantees freshness in hot weather.

BREATHABLE

Merino wool fiber can absorb a large amount of water vapor, including body moisture, which is then released into the air. This function keeps the skin dry even during physical activity.

SOFT

Lint-free, it does not irritate and provides exceptional softness when in contact with the skin.

ODOR RESISTANCE

This natural quality of wool allows less washing and makes clothes especially suitable for sports and travel. It also guarantees a reduction in water and detergent waste.

DURABILITY OVER TIME

These items are made for the ages. We believe that the main way to contribute to environmental protection is to buy less and better.

JC0195 | INNER GLOVE MERINOS

SHELL: 96% WOOL, 4% ELASTANE

SIZE: LARGE, MEDIUM

PACKAGED FOR SALE 3 PCS. PER COLOUR AND SIZE



BLACK 001

180 GR.

CARRY OVER



JC0196 | BALACLAVA MERINOS

SHELL: 96% WOOL, 4% ELASTANE

ONE SIZE

PACKAGED FOR SALE 3 PCS. PER COLOUR



BLACK 001



DETAIL

180 GR.

CARRY OVER



HOW TO FIT

JC0169 | SEAMLESS BALACLAVA

SHELL: 46% METAL, 46% POLYESTER,
8% ELASTANE

ONE SIZE

PACKAGED FOR SALE 3 PCS. PER
COLOUR



SEAMLESS
DESIGN



ANTIBACTERIAL

OEKO-TEX®
STANDARD 100

CARRY
OVER

BLACK 001



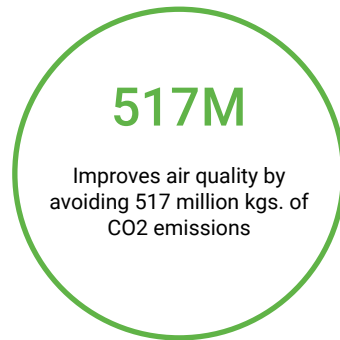
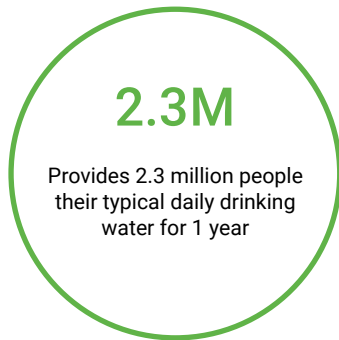
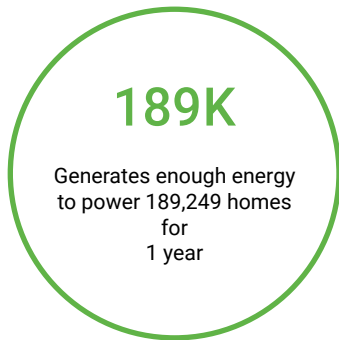
FIBER MADE FROM RECYCLED PLASTIC BOTTLES

Billions of plastic bottles go into landfills every year. But now you can do something about it. REPREVE is the leading, most trusted, branded performance fiber made from recycled materials (including plastic bottles).

Recycled bottles are transformed into an extraordinary fiber, ideal for making stylish accessories. The process used incorporates properties such as breathability, adaptive heating and cooling, water repellency and more at the fiber level. For reliable and durable quality.

Products made with REPREVE recycled performance fibers are simply made better. Earth-friendly, and made for everyday life: with features like wicking, comfort stretch, and soil release embedded in the fibers.

CompaRed 021 to making what's called virgin fiber, making REPREVE offsets using new Petrol 067eum, emitting fewer Green 072house gases and conserving water and energy in the process. That makes a big difference for our future.



All the following products are
**MULTIFUNCTIONAL RECYCLED
AND ANTIBACTERIAL**

50 X 25 CM

SHELL: 100% POLYESTER

PACKAGED FOR SALE
3 PCS. PER COLOUR



HOW TO FIT



JC0185
NO FLEECE



JC0186
WITH FLEECE

50 + 25 X 25 CM

SHELL: 100% POLYESTER
LINING: 100% POLYESTER

PACKAGED FOR SALE
3 PCS. PER COLOUR

CHOOSE YOUR PRINT

JC0185-1
JC0186-1



BLACK 001



BLUE NAVY 006

JC0185-2
JC0186-2

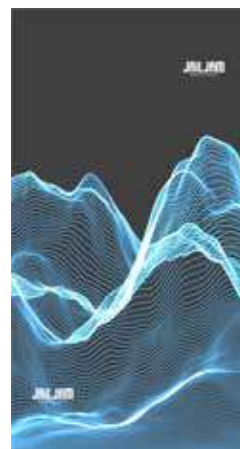


BLUE NAVY 006

JC0185-3
JC0186-3

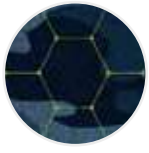


BLACK 001



TURQUOISE 009

JC0185-4
JC0186-4



DETAIL



BLACK 001



BLUE NAVY 006



MILITARY



PINK 037

JC0185-5
JC0186-5



DETAIL



BLUE NAVY 006



FUXIA 024



GRAPES 028

JC0185-7
JC0186-7



DETAIL



BLUE NAVY 006



MED GREY 003

JC0185-8
JC0186-8



DETAIL



MED GREY 003

JC0186-10



BLACK 001



FUXIA 024

JC0186-11



AQUA 011



ROYAL BLUE 051

JC0186-12
JC0185-12



MULTICOLOR 049

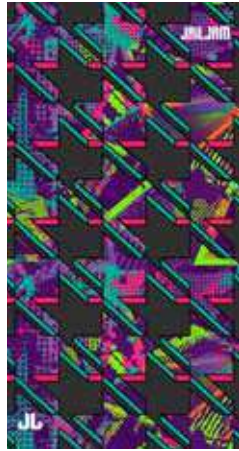


BLACK 001

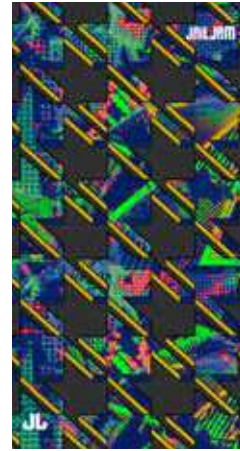


AQUA 011

JC0186-13



FUXIA 024



ROYAL BLUE 051

JC0186-14



MULTICOLOR 049



deep

JAM

SUPER

CAT

HEY!

KIDZ

COLORFUL,
COMFORTABLE
AND FUN

A collection dedicated to children featuring trendy styles and soft and warm yarns. a wide selection of accessories to protect the most demanding children with delicacy and style. games of colors, jAqua 011rds and cute designs put jail jam's signature on this collection

04 Strawberry

JS2140 | HAPPY

SHELL: 55% POLYESTER, 18% ACRYLIC,
17% POLYAMIDE, 10% WOOL

ONE SIZE

PACKAGED FOR SALE
3 PCS. PER COLOUR



CARRY
OVER



CORAL 022



GRAPES 028



MED GREY 003



IVORY 043



TURQUOISE 009

JS2141 | MELODY

SHELL: 47% ACRYLIC, 44% POLYESTER,
6% POLYAMIDE, 3% WOOL

ONE SIZE

PACKAGED FOR SALE
3 PCS. PER COLOUR



BEIGE 031



GRAPES 028



PINK 037

JS2142 | MAYA

SHELL: 100% ACRYLIC

ONE SIZE

PACKAGED FOR SALE
3 PCS. PER COLOUR



BLACK 001



WHITE 005

JS2143 | AURORA

SHELL: 55% ACRYLIC, 36% POLYESTER,
5% WOOL, 4% ELASTANE
INTERNAL: 100% POLYESTER

ONE SIZE

PACKAGED FOR SALE
3 PCS. PER COLOUR



BLACK 001



LILAC 029



WHITE 005

JS2124 | GAIA HEADBAND

10 X 20 CM

SHELL: 65% ACRYLIC,
35% POLYESTER

ONE SIZE

PACKAGED FOR SALE
3 PCS. PER COLOUR



CARRY OVER



GRAPES 028



IVORY 043



PINK 037



PEARL GREY 004

JS2123 | GAIA

SHELL: 65% ACRYLIC,
35% POLYESTER
LINING: 100% POLYESTER

ONE SIZE

PACKAGED FOR SALE
3 PCS. PER COLOUR



FULL
FLEECE



LUREX

CARRY
OVER



AQUA 011



GRAPES 028



IVORY 043



PEARL GREY 004



PINK 037

JS2125 | GAIA LOOP

20 X 26 CM

SHELL: 65% ACRYLIC,
35% POLYESTER

PACKAGED FOR SALE
3 PCS. PER COLOUR



LUREX

CARRY
OVER



GRAPES 028



IVORY 043



PEARL GREY 004



PINK 037

JS2133 | JESSIE

SHELL: 39% ACRYLIC,
33% POLYAMIDE,
27% POLYESTER,
1% ELASTAN

ONE SIZE

PACKAGED FOR SALE
3 PCS. PER COLOUR



CARRY
OVER



BLACK 001

PEARL GREY 004

JS2131 | MULAN

SHELL: 66% ACRYLIC,
31% POLYAMIDE, 3% ELASTANE

ONE SIZE

PACKAGED FOR SALE
3 PCS. PER COLOUR



BORDEAUX 066



LILAC 029

JS2132 | MULAN LOOP

12 X 50 CM

SHELL: 66% ACRYLIC,
31% POLYAMIDE, 3% ELASTANE

PACKAGED FOR SALE
3 PCS. PER COLOUR



BORDEAUX 066



LILAC 029

JS2121 | ETA BETA

SHELL: 55% ACRYLIC,
36% POLYESTER, 5% WOOL,
4% ELASTANE

ONE SIZE

PACKAGED FOR SALE
3 PCS. PER COLOUR



LILAC 029

JS2122 | ETA BETA LOOP

20 X 50 CM

SHELL: 55% ACRYLIC,
36% POLYESTER, 5% WOOL,
4% ELASTANE
LINING: 100% POLYESTER

PACKAGED FOR SALE
3 PCS. PER COLOUR



LILAC 029

JS2117 | TIP & TAP

SHELL: 65% POLYESTER, 35% ACRYLIC
LINING: 100% POLYESTER

ONE SIZE

PACKAGED FOR SALE
3 PCS. PER COLOUR



PINK 037

JS2118 | TIP & TAP LOOP

17 X 26 CM

SHELL: 65% POLYESTER,
35% ACRYLIC
LINING: 100% POLYESTER

PACKAGED FOR SALE
3 PCS. PER COLOUR



PINK 037

JS2127 | PETUNIA

SHELL: 79% ACRYLIC,
8% POLYAMIDE, 8% POLYESTER, 5% WOOL
LINING: 100% POLYESTER

ONE SIZE

PACKAGED FOR SALE
3 PCS. PER COLOUR



LILAC 029



MED GREY 003

JS2128 | PETUNIA LOOP

18 X 26 CM

SHELL: 79% ACRYLIC,
8% POLYAMIDE, 8% POLYESTER, 5% WOOL
LINING: 100% POLYESTER

PACKAGED FOR SALE
3 PCS. PER COLOUR



LILAC 029



MED GREY 003

JS2155 | SUN

SHELL: 100% ACRYLIC

ONE SIZE

PACKAGED FOR SALE
3 PCS. PER COLOUR



LIME 033



PINK 037



YELLOW 026

JS2156 | SUN SCARF

25 X 140 CM

SHELL: 100% ACRYLIC

PACKAGED FOR SALE
3 PCS. PER COLOUR



LIME 033



PINK 037



YELLOW 026

JS2151 | LUCKY

SHELL: 100% ACRYLIC

ONE SIZE

PACKAGED FOR SALE
3 PCS. PER COLOUR



BLUE NAVY 006



FUXIA 024



MED GREY 003

JS2152 | ROLLY

SHELL: 55% ACRYLIC, 36% POLYESTER,
5% WOOL, 4% ELASTANE

ONE SIZE

PACKAGED FOR SALE
3 PCS. PER COLOUR



BLACK 001



MED GREY 003

JS2153 | SKIPPER

SHELL: 100% ACRYLIC

ONE SIZE

PACKAGED FOR SALE
3 PCS. PER COLOUR



RED 021



TANGERINE 025

JS2154 | SKIPPER LOOP

26 X 22 CM

SHELL: 100% ACRYLIC
INTERNAL: 100% POLYESTER

PACKAGED FOR SALE
3 PCS. PER COLOUR



RED 021



TANGERINE 025

JS2150 | DROLL

SHELL: 90% ACRYLIC, 10% WOOL

ONE SIZE

PACKAGED FOR SALE
3 PCS. PER COLOUR



BLACK 001



PEARL GREY 004



IVORY 043



DETAIL

JS2000 | DIAMOND

SHELL: 95% COTTON, 5% ELASTANE

ONE SIZE

PACKAGED FOR SALE
3 PCS. PER COLOUR



CARRY
OVER



BLACK 001



BLUE NAVY 006



FUXIA 024



MED GREY 003



MILITARY 045

JS2112 | DINAMITE BLA

SHELL: 100% ACRYLIC

ONE SIZE

PACKAGED FOR SALE
3 PCS. PER COLOUR

CARRY
OVER



BLACK 001



BLUE NAVY 006



MILITARY 045



PETROL 067



PINK 037



PEARL GREY 004



RED 021



YELLOW 026

JS2053 | BEHEMOTH

SHELL: 100% ACRYLIC

ONE SIZE

PACKAGED FOR SALE
3 PCS. PER COLOUR

CARRY
OVER



REVERSE



4 WAY
TO FIT



BLACK 001



BLUE NAVY 006



MILITARY 045

JS2134 | PLUTO

SHELL: 39% ACRYLIC,
33% POLYAMIDE, 27% POLYESTER,
1% ELASTAN

ONE SIZE

PACKAGED FOR SALE
3 PCS. PER COLOUR



TOUCH SCREEN
COMPLIANT

CARRY
OVER



BLACK 001



BLUE NAVY 006

JS2115 | TIBURZIO

SHELL: 100% ACRYLIC
LINING: 100% POLYESTER

ONE SIZE

PACKAGED FOR SALE
3 PCS. PER COLOUR



BLUE NAVY 006



MUD 018

JS2116 | TIBURZIO LOOP

30 X 26 CM

SHELL: 100% ACRYLIC
LINING: 100% POLYESTER

PACKAGED FOR SALE
3 PCS. PER COLOUR



BLUE NAVY 006



MUD 018

JS1102 | AMELIA

SHELL: 60% POLYESTER,
28% VISCOSE, 12% POLYAMIDE
LINING: 100% POLYESTER
POM PON: 70% POLYESTER,
30% ACRYLIC

ONE SIZE

PACKAGED FOR SALE
3 PCS. PER COLOUR



FULL
FLEECE



SEQUINS



FAUX
FUR

CARRY
OVER



AQUA 011



BLACK 001



FUXIA 024



GRAPES 028



PEARL GREY 004



WHITE 005

JS1114 | AMELIA LOOP

26 X 17 CM

SHELL: 60% POLYESTER, 28% VISCOSE, 12%
POLYAMIDE
INTERNAL: 100% POLYESTER

PACKAGED FOR SALE
3 PCS. PER COLOUR



TEDDY
FLEECE



SEQUINS



AQUA 011



BLACK 001



FUXIA 024



GRAPES 028



PEARL GREY 004



WHITE 005

JS1110 | HOP

SHELL: 100% ACRYLIC
INTERNAL: 100% POLYESTER

ONE SIZE

PACKAGED FOR SALE
3 PCS. PER COLOUR



FUXIA 024



PEARL GREY 004



TANGERINE 025

JS1111 | HOP LOOP

26 X 17 CM

SHELL: 100% ACRYLIC
INTERNAL: 100% POLYESTER

PACKAGED FOR SALE
3 PCS. PER COLOUR



FUXIA 024



PEARL GREY 004



TANGERINE 025

JS1112 | FLYNN

SHELL: 100% ACRYLIC
INTERNAL: 100% POLYESTER

ONE SIZE

PACKAGED FOR SALE
3 PCS. PER COLOUR



BLUE NAVY 006



PINK 037



YELLOW 026

JS1113 | LILLI

SHELL: 100% ACRYLIC
INTERNAL: 100% POLYESTER

ONE SIZE

PACKAGED FOR SALE
3 PCS. PER COLOUR



GRAPES 028



PINK 037

JS1101 | ACCIUGA

SHELL: 100% ACRYLIC
LINING: 100% POLYESTER

ONE SIZE

PACKAGED FOR SALE
3 PCS. PER COLOUR



CARRY
OVER



APPLE 014



BLUE NAVY 006



FUXIA 024



PETROL 067



RED 021



TANGERINE 025



WHITE 005



YELLOW 026

JS1100 | GOOFY

SHELL: 100% ACRYLIC
LINING: 100% POLYESTER

ONE SIZE

PACKAGED FOR SALE
3 PCS. PER COLOUR



BLACK 001



BLUE NAVY 006



GREEN 072

JS1106 | MERLOCK

SHELL: 100% ACRYLIC
LINING: 100% POLYESTER

ONE SIZE

PACKAGED FOR SALE
3 PCS. PER COLOUR



CARRY
OVER



FUXIA 024



GREEN 072



TANGERINE 025

JS1089 | CHULAINN

SHELL: 100% ACRYLIC
LINING: 100% POLYESTER

ONE SIZE

PACKAGED FOR SALE
3 PCS. PER COLOUR



CARRY
OVER



APPLE 014



AQUA 011



BLUE NAVY 006



FUXIA 024



LILAC 029



MED GREY 003



PINK 037



ROYAL BLUE 051

JS0071 | EUROMIR LOOP

22 X 22 CM

SHELL: 95% POLYESTER,
5% ELASTANE

PACKAGED FOR SALE
3 PCS. PER COLOUR



280 GR.

CARRY
OVER



APPLE 014



AVIO 007



BLACK 001



BLUE NAVY 006



FUXIA 024



RED 021



PINK 037



WHITE 005

JS0099 | EUROMIR HEADBAND

8 X 21 CM

SHELL: 95% POLYESTER, 5% ELASTANE

PACKAGED FOR SALE
3 PCS. PER COLOUR



280 GR.

CARRY
OVER



AVIO 007



PINK 037



WHITE 005



BLUE NAVY 006



FUXIA 024

JS0072 | EUROMIL GLOVES

SHELL: 95% POLYESTER, 5% ELASTANE

SIZE: 3-6 YEARS, 7-10 YEARS

PACKAGED FOR SALE
3 PCS. PER COLOUR AND SIZE



280 GR.

CARRY
OVER



BLACK 001



BLUE NAVY 006



FUXIA 024

JS0098 | ATOMINO

SHELL: 92% POLYESTER, 8% ELASTANE

3-6 YEARS, 7-10 YEARS

PACKAGED FOR SALE
3 PCS. PER COLOUR AND SIZE



CARRY
OVER



FUXIA 024



ROYAL BLUE 051

JS0005 | BENDER

SHELL: 90% POLYESTER, 10% ELASTANE

3-6 YEARS
7-10 YEARS

PACKAGED FOR SALE
3 PCS. PER COLOUR AND SIZE



180 GR.

CARRY OVER



BLACK 001



BLUE NAVY 006



FUXIA 024



RED 021



ROYAL BLUE 051

JS0079 | BENDER GLOVES

SHELL: 90% POLYESTER,
10% ELASTANE

3-6 YEARS, 7-10 YEARS

PACKAGED FOR SALE
3 PCS. PER COLOUR AND SIZE



180 GR.

CARRY OVER



BLACK 001



BLUE NAVY 006



FUXIA 024



RED 021

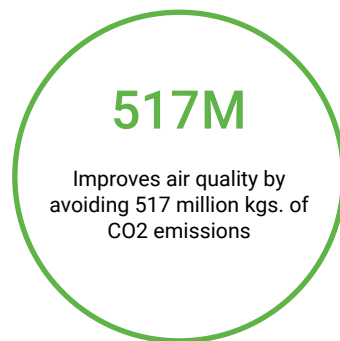
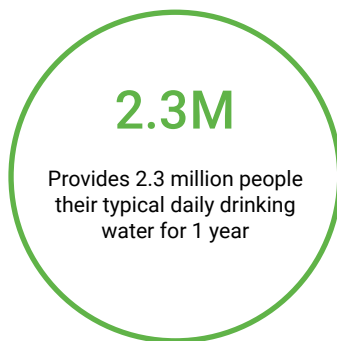
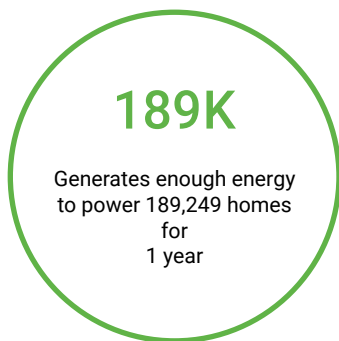
FIBER MADE FROM RECYCLED PLASTIC BOTTLES

Billions of plastic bottles go into landfills every year. But now you can do something about it. REPVE is the leading, most trusted, branded performance fiber made from recycled materials (including plastic bottles).

Recycled bottles are transformed into an extraordinary fiber, ideal for making stylish accessories. The process used incorporates properties such as breathability, adaptive heating and cooling, water repellency and more at the fiber level. For reliable and durable quality.

Products made with REPVE recycled performance fibers are simply made better. Earth-friendly, and made for everyday life: with features like wicking, comfort stretch, and soil release embedded in the fibers.

CompaRed 021 to making what's called virgin fiber, making REPVE offsets using new Petrol 067eum, emitting fewer Green 072house gases and conserving water and energy in the process. That makes a big difference for our future.



All the following products are RECYCLED MAKO AND ANTIBACTERIAL

40 X 20 CM

SHELL: 100% POLYESTER

PACKAGED FOR SALE
3 PCS. PER COLOUR



HOW TO FIT



JS0096
NO FLEECE



JS0097
WITH FLEECE

40 X 20 +20 CM

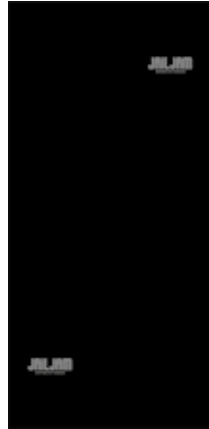
SHELL: 100% POLYESTER
LINING: 100% POLYESTER

PACKAGED FOR SALE
3 PCS. PER COLOUR

JS0096-1
JS0097-1



APPLE 014



BLACK 001



BLUE NAVY 006



FUXIA 024



TURQUOISE 009

JS0096-2
JS0097-2



GRAPES 028



LIME 033



ROYAL BLUE 051

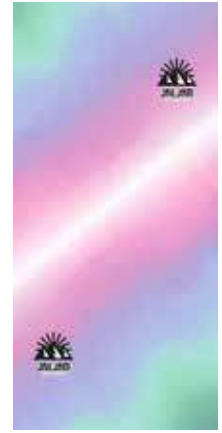
JS0096-3
JS0097-3



AQUA

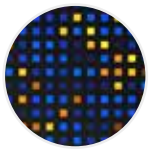


BLUE NAVY 006

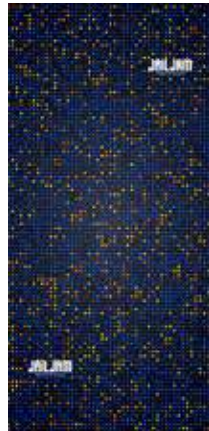


PINK 037

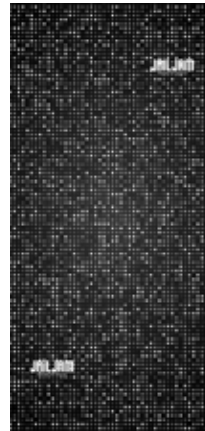
JS0096-4
JS0097-4



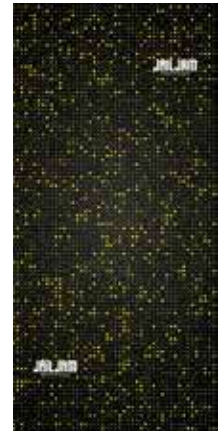
DETAIL



BLUE NAVY 006



MED GREY 003



MILITARY 045

JS0096-6
JS0097-6



GREEN 072



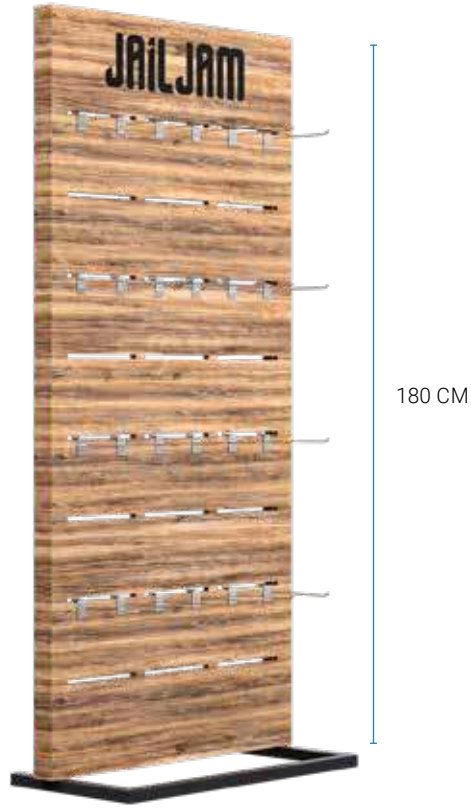
PINK 037

**POP - MECHANDISING
PACKAGING
TECHNICAL INFORMATION
INDEX**



JPP0078 | WALL DISPLAY WIDE

L 85 X H 180 X P 40 CM



JPP0079 | DOUBLE SIDE DISPLAY WIDE

L 85 X H 160 X P 40 CM



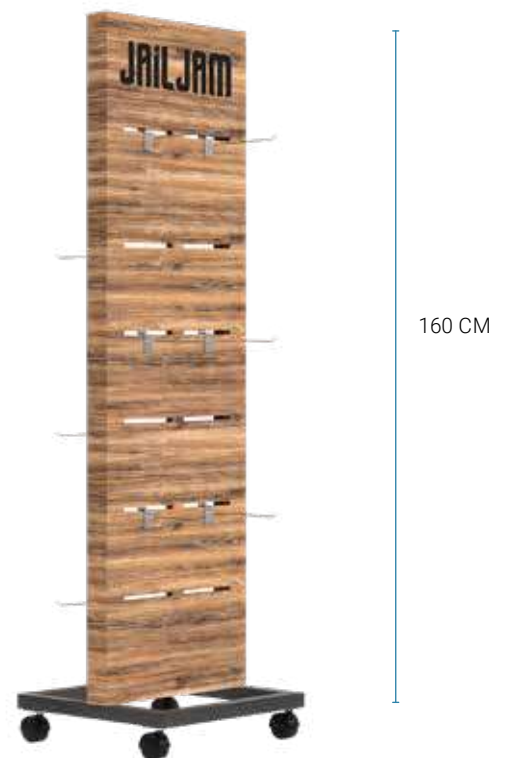
JPP0080 | WALL DISPLAY

L 40 X H 180 X P 40 CM



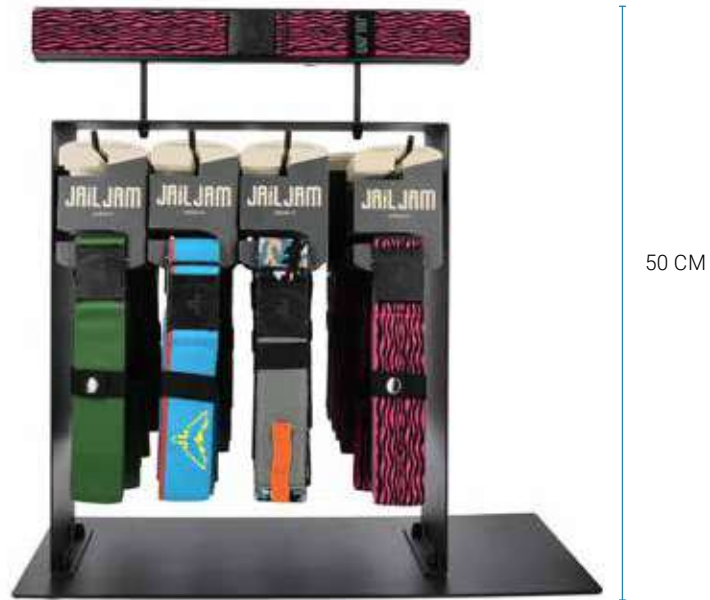
JPP0081 | DOUBLE SIDE DISPLAY

L 40 X H 160 X P 40 CM



JPP0087 | DISPLAY DA BANCO

W 50 X D 25 X H 50 CM



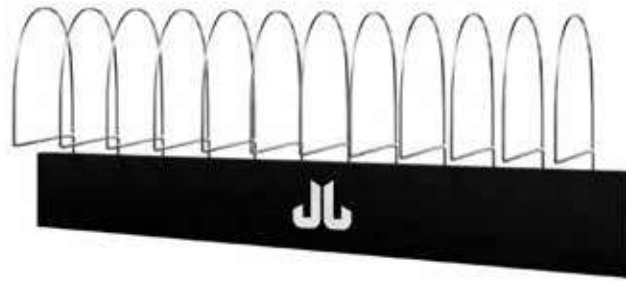
ADM0011 | WINDOW DISPLAY

L 70 X W 30 X H 70 CM



JPP0057 | WALL PANEL

12 X 80 CM



JPP0009 | METAL BRACKET WITH PVC DISPLAY

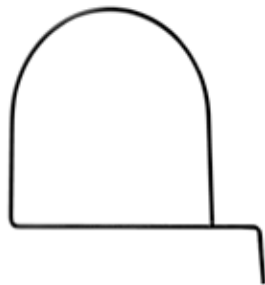


JPP0013 | METAL BRACKET

25 CM



JPP0021 | METAL BEANIE HANGE



JPP0026 | JAM WRITABLE GIFT PACK



JPP0008 | INFLATED DISPLAY



STYLE

HEADWEAR

SCARVES

GLOVES

NECKTUBE

BALACLAVA

NECKWARMER

APPLE



CARAMBOLA



STRAWBERRY



PACKAGING OVERVIEW



HEADWEAR



SCARVES



NECKWARMER



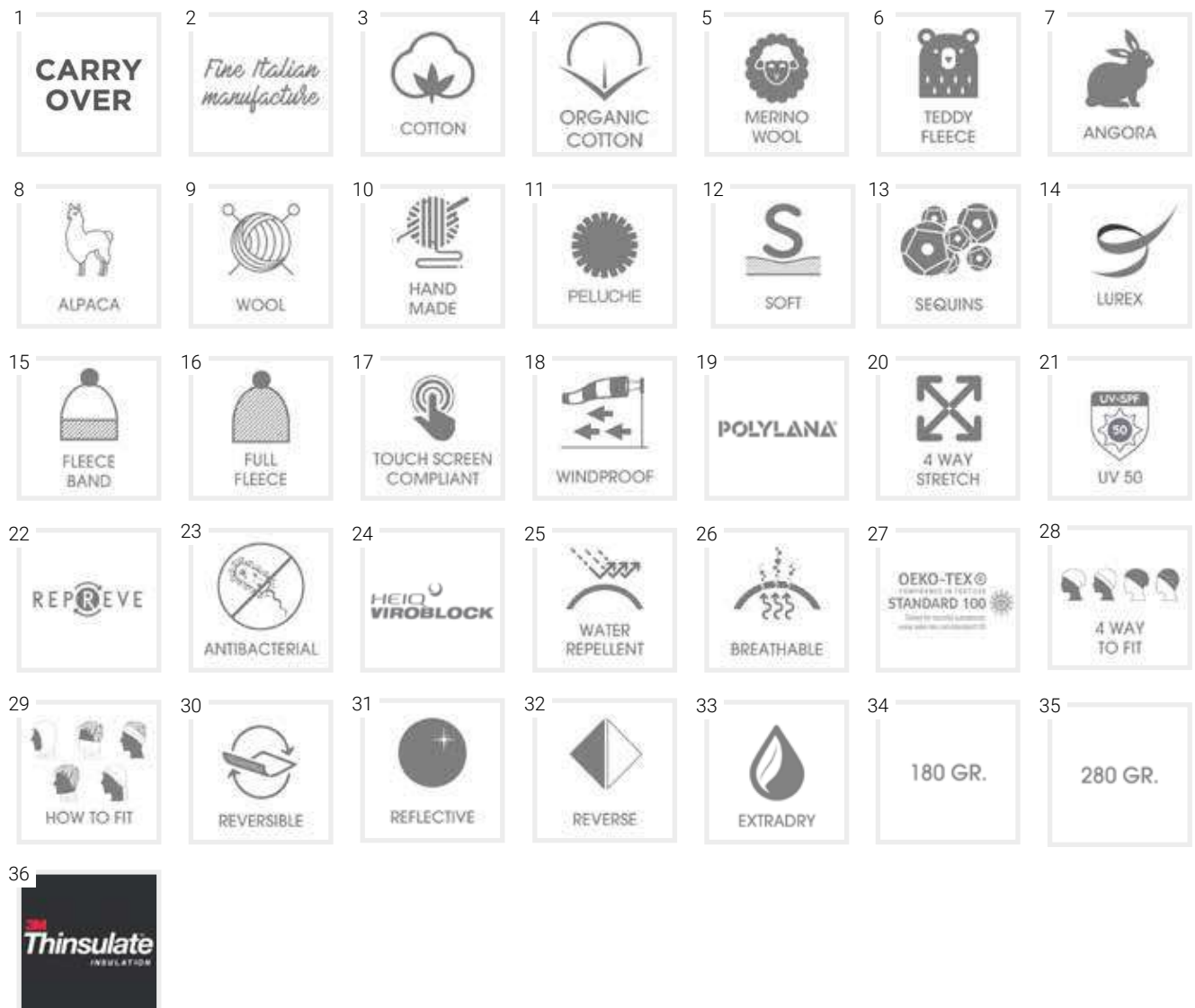
GLOVES



NECKTUBE



BALACLAVA



- | | | | |
|--|---|---|---|
| 1. Carry over | Special treatment to make the product softer | 21. Uv 50 Treatment to protect by uv | 31. Reflective Reflective yarn |
| 2. Fine italian manufacture Made in italy | 13. Sequins | 22. Repeve Repeve® is a fiber made from recycled plastic bottles | 32. Reverse Reversible style that can be fit in 2 ways |
| 3. Cotton Style made with brushed cotton jersey or cotton yarn | 14. Lurex | 23. Antibacterial Style has antibacterial treatment | 33. Extra dry Style made in fabric that dry quickly |
| 4. Organic cotton Style made with organic cotton fiber | 15. Fleece band Lining is a polar fleece band from 7 to 11 cm in height | 24. Viroblock Special treatment | 34. 180 Gr. |
| 5. Merinos wool Yarn fabric with merinos wool blend mulesing free | 16. Full fleece Full fleece lining till the top of the item | 25. Water repellent Fabric with water repellent finishing | 35. 280 Gr. |
| 6. Teddy fleece Polyester hairy fleece fabric | 17. Touch screen Glove with 2 fingers touch screen compliant | 26. Breathable Fabric that keeps you dry from moisture | 36. Thinsulate 3m The original thin, light and warm synthetic insulation |
| 7. Angora | 18. Windproof Fabric with special membrane windproof | 27. Oeko-tex Style made by supplier with oeko-tex certification | |
| 8. Alpaca Yarn fabric with alpaca wool blend | 19. Polylana recycled Polylana® is a low-impact alternative to 100% acrylic fiber with less energy, water, waste, co2 and microfiber release | 28. 4 Way to fit Reversible style that Can be fit in four ways | |
| 9. Wool Yarn fabric with wool blend | 20. 4 Way stretch Fabric with elastan And 4 way stretch Weaving | 29. How to fit | |
| 10. Handmade | | 30. Reversible | |
| 11. Peluche Fabric or pom pon made with polyester or acrylic fur | | | |
| 12. Soft | | | |





INDEX

| | | | | | |
|---------|-----|--------|----|--------|----|
| ADM0011 | 146 | JA4365 | 65 | JA4517 | 47 |
| JA2003 | 97 | JA4370 | 66 | JA4518 | 52 |
| JA2010 | 38 | JA4371 | 66 | JA4519 | 52 |
| JA2022 | 38 | JA4375 | 79 | JA4520 | 52 |
| JA2023 | 40 | JA4378 | 79 | JA4521 | 51 |
| JA2116 | 96 | JA4394 | 21 | JA4522 | 51 |
| JA2135 | 84 | JA4395 | 23 | JA4523 | 51 |
| JA2137 | 94 | JA4425 | 24 | JA4525 | 24 |
| JA2138 | 93 | JA4433 | 64 | JA4526 | 54 |
| JA2139 | 93 | JA4452 | 27 | JA4527 | 54 |
| JA2140 | 92 | JA4453 | 23 | JA4528 | 55 |
| JA2141 | 92 | JA4454 | 28 | JA4529 | 57 |
| JA2142 | 98 | JA4465 | 18 | JA4530 | 57 |
| JA2145 | 99 | JA4468 | 58 | JA4531 | 58 |
| JA2146 | 86 | JA4469 | 59 | JA4534 | 59 |
| JA2147 | 86 | JA4472 | 29 | JA4535 | 59 |
| JA2148 | 87 | JA4476 | 49 | JA4536 | 60 |
| JA2149 | 87 | JA4478 | 37 | JA4537 | 60 |
| JA2150 | 88 | JA4485 | 78 | JA4541 | 76 |
| JA2151 | 88 | JA4489 | 41 | JA4542 | 76 |
| JA2154 | 95 | JA4490 | 41 | JA4543 | 68 |
| JA2155 | 89 | JA4491 | 61 | JA4545 | 69 |
| JA2156 | 83 | JA4492 | 61 | JA4546 | 69 |
| JA2157 | 91 | JA4493 | 14 | JA4547 | 73 |
| JA2158 | 91 | JA4494 | 15 | JA4548 | 73 |
| JA2159 | 83 | JA4495 | 17 | JA4549 | 73 |
| JA2160 | 92 | JA4496 | 16 | JA4560 | 74 |
| JA2162 | 83 | JA4497 | 18 | JA4561 | 74 |
| JA4124 | 42 | JA4498 | 46 | JA4562 | 75 |
| JA4151 | 39 | JA4499 | 46 | JA4564 | 74 |
| JA4202 | 40 | JA4500 | 34 | JA4565 | 74 |
| JA4228 | 63 | JA4502 | 19 | JA4566 | 75 |
| JA4276 | 63 | JA4503 | 19 | JA4567 | 75 |
| JA4279 | 64 | JA4504 | 20 | JA4569 | 49 |
| JA4293 | 43 | JA4505 | 20 | JA4570 | 58 |
| JA4315 | 44 | JA4506 | 20 | JA4571 | 36 |
| JA4316 | 43 | JA4507 | 33 | JA4572 | 69 |
| JA4325 | 40 | JA4508 | 33 | JA4573 | 70 |
| JA4348 | 29 | JA4509 | 37 | JA4574 | 70 |
| JA4350 | 66 | JA4510 | 37 | JA4575 | 69 |
| JA4351 | 31 | JA4512 | 38 | JA4576 | 69 |
| JA4352 | 68 | JA4514 | 41 | JA4577 | 70 |
| JA4353 | 63 | JA4515 | 48 | JA4578 | 77 |
| JA4356 | 79 | JA4516 | 48 | JA4579 | 77 |

| | | | | | |
|-----------|-----|-----------|---------|----------|-----|
| JA4580 | 78 | JC0186-4 | 118 | JS0097-3 | 143 |
| JA4581 | 77 | JC0186-5 | 118 | JS0097-4 | 143 |
| JA4582 | 77 | JC0186-7 | 119 | JS0097-6 | 143 |
| JA4583 | 76 | JC0186-8 | 119 | JS0098 | 139 |
| JA4584 | 78 | JC0186-10 | 119 | JS0099 | 139 |
| JA4585 | 78 | JC0186-11 | 120 | JS1089 | 137 |
| JA4587 | 22 | JC0186-12 | 120 | JS1100 | 136 |
| JA4588 | 26 | JC0186-13 | 121 | JS1101 | 136 |
| JA4589 | 30 | JC0186-14 | 121 | JS1102 | 134 |
| JA4590 | 47 | JC0190 | 113 | JS1106 | 137 |
| JA4591 | 53 | JC0191 | 112 | JS1110 | 135 |
| JC0022 | 104 | JC0192 | 106 | JS1111 | 135 |
| JC0028 | 102 | JC0194 | 104 | JS1112 | 135 |
| JC0029 | 102 | JC0195 | 114 | JS1113 | 135 |
| JC0030 | 103 | JC0196 | 114 | JS1114 | 134 |
| JC0044 | 111 | JC0197 | 112 | JS2000 | 131 |
| JC0150 | 110 | JC0198 | 113 | JS2053 | 132 |
| JC0054 | 105 | JC0199 | 111 | JS2112 | 132 |
| JC0055 | 105 | JC0200 | 105 | JS2115 | 133 |
| JC0056 | 105 | JG0127 | 44 | JS2116 | 133 |
| JC0070 | 103 | JPP0008 | 147 | JS2117 | 128 |
| JC0072 | 106 | JPP0009 | 147 | JS2118 | 128 |
| JC0074 | 103 | JPP0013 | 147 | JS2121 | 127 |
| JC0159 | 104 | JPP0021 | 147 | JS2122 | 127 |
| JC0164 | 108 | JPP0026 | 147 | JS2123 | 126 |
| JC0165 | 106 | JPP0057 | 147 | JS2124 | 125 |
| JC0167 | 112 | JPP0078 | 145 | JS2125 | 126 |
| JC0169 | 115 | JPP0079 | 145 | JS2127 | 128 |
| JC0175 | 107 | JPP0080 | 145 | JS2128 | 128 |
| JC0177 | 109 | JPP0081 | 145 | JS2131 | 127 |
| JC0182 | 104 | JPP0087 | 86, 146 | JS2132 | 127 |
| JC0185 | 116 | JS0005 | 140 | JS2133 | 127 |
| JC0185-1 | 117 | JS0071 | 138 | JS2134 | 132 |
| JC0185-2 | 117 | JS0072 | 139 | JS2140 | 124 |
| JC0185-3 | 117 | JS0079 | 140 | JS2141 | 124 |
| JC0185-4 | 118 | JS0096 | 141 | JS2142 | 124 |
| JC0185-5 | 118 | JS0096-1 | 142 | JS2143 | 125 |
| JC0185-7 | 119 | JS0096-2 | 142 | JS2150 | 131 |
| JC0185-8 | 119 | JS0096-3 | 143 | JS2151 | 129 |
| JC0185-12 | 120 | JS0096-4 | 143 | JS2152 | 130 |
| JC0186 | 116 | JS0096-6 | 143 | JS2153 | 130 |
| JC0186-1 | 117 | JS0097 | 141 | JS2154 | 130 |
| JC0186-2 | 117 | JS0097-1 | 142 | JS2155 | 129 |
| JC0186-3 | 117 | JS0097-2 | 142 | JS2156 | 129 |

A series of horizontal dotted lines for writing, spanning the width of the page.

A series of horizontal dotted lines for writing, spanning the width of the page.

A series of horizontal dotted lines for writing, spanning the width of the page.

MIRAGE
FASHION AND SPORTSWEAR ACCESSORIES

Mirage S.r.l.
Centergross Blocco 32
Via degli Speciali, 161
40050, Funo di Argelato
Bologna, Italy
Pbx. +39 051 86 51 711
Fax +39 051 86 32 47



info@jailjam.it
www.jailjam.it

 @jailjam

 @jailjam